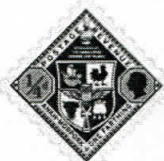
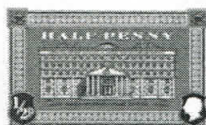


# THE STAMPS ..... so far *With enormous thanks to Terry Pratchett, who hasn't seemed to mind a bit.*



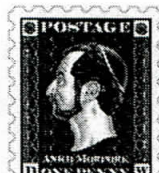
## The Farthing stamp Merchants Guild

sponsored by the Candlewick makers and Oil men  
Maroon on a cream body.  
Hand perforated  
25mm x 25mm



## The Half penny Post Office Red

Pimpernell Orange on a white face.  
Patrician in profile opposite denomination.  
Central design of the Original Post Office before restoration.  
Some subject to in line perforations (coarse) cut.



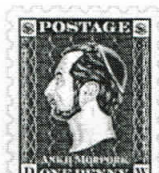
## The Penny Patrician

Mostly Black.  
showing the head of Lord Vetinari in profile. Has a fine burelage to the background.  
Some subject to in line perforations (coarse) cut.



## The Eminence Gris

there is a subtle difference



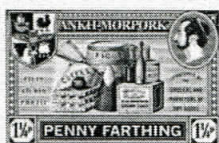
## The Penny Red

Indian red in colour, this stamp was trialed by Teemer & Spools but not adopted by the Post Office.  
Distributed only through the Journal.



## The Penny Black Civic

Easily recognizable because the paper is thinner (80gm) than the normal Penny's, and the printing process is one we have never used before.  
Printed on a letterset machine on 80gm paper  
Cartouches bear H - V & A - M



## The Penny farthing Stamp Merchants Guild

sponsored by the Grocers and Dry goods Merchants.  
Hand perforated  
25mm x 37mm  
Umber on a cream body.



## The Ankh

**Two Penny Purple**  
30mm x 35mm  
Ripe plum Purple overall.  
Central motive of Ankh-Morpork Coat of Arms.  
Significant numeral bottom centre.  
Some subject to in line perforations (coarse) cut.



## The Five Penny Morporkia Blue

35mm x 40mm  
Dual Blue tints over a white ground with central numeral at top.  
Under which is Morporkia girdled, fork in the assent.  
Some subject to in line perforations (coarse) cut.



## The Ten Penny Morporkia Green

35mm x 40mm  
Brassica tints over a white ground  
Some subject to in line perforations (coarse) cut.



## The Merchants Guild Three penny

sponsored by the Fish Mongers  
Hand perforated  
25mm x 37mm  
An ox blood brown ink on a cream body



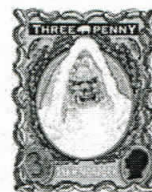
## The Assassins Guild Three Pence

(The Thrup'ny Resurrection)  
Hand Perforated  
35mm x 38mm  
A rich Blue & Purple on a white body paper.



## The Assassins Guild Postage Paid

The Thrup'ny Dreadful ('the Zombie stamp')  
Hand Perforated  
35mm x 38mm  
A rich Blue & Purple on a white and very dead, body.



## The 2004 Hogswatch Stamp

Green tints with sausages in pink  
2,900 of these produced including those used on the Hogswatch First Day Cover.



## The Merchants Guild Fifty penny

sponsored by the Butchers and Tripe Merchants.  
Prussian Green on a cream body  
Hand perforated  
25mm x 37mm

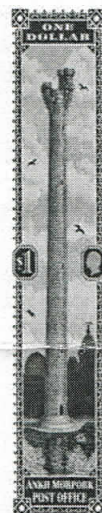


## The 50p Cabbage Green

A special Brassica Edition, showing the verdiant glory of the Sto Plains.  
Patrician opposite a cabbage rampant.  
35mm x 28mm

## The \$1 Tower of Art Green

Depicting the Unseen University Tower of Art amid its scholastic environment.  
A most unusual stamp with reports of transfiguration within the engraving.  
All are subject to in line perforations (coarse) cut.  
30mm x 95mm



## Hidden Gems

As with all forms of collecting, there has to be something left to chance, and something to find.

The stamps that are hand perforated are by their very nature rare. It's a long-winded process, and the chances of cocking up a sheet of stamps are great.

A few stamps of all denominations have been put through this process, But the \$1 Tower of Art, and the \$5 Blue Triangle, and all the Merchant stamps are exclusively hand perforated.

It is within these very short run stamps that you will get the little 'sports' that make collecting such ... fun



## The \$5 Brass Bridge Blue Triangle

Triangular in shape with an Empire Blue base tint giving way to Octorine hints.  
Central design of the famous Brass Bridge over the river Ankh on which can be seen a wizard, watchman, and Assassin. There is also a small boy but he does not count.

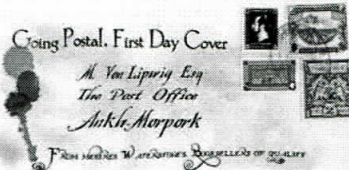
The \$5 is very, very, rare (500 in all ... ever)  
All are subject to in line perforations (coarse) cut.

## First Day Covers

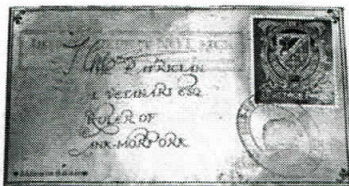
These divide into two categories.

The first is a conventional First Day Cover of the sort that the Post Office produces commemorating national events and the like. These are produced in the hundreds, and in the case of the Waterstones first day cover 10,000 were put into circulation.

The second category can best be described as being Discworld artefacts and are invariably hand finished, and conform in some way to what Terry has written. These 'artefacts' will only ever be produced in small numbers and are consequently much harder for the collector to obtain on the secondary market.

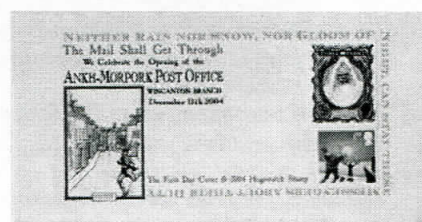


Waterstone's FDC October 2004. 10,000  
Given away Free by Waterstone's



**The Thrup'ny Dreadful Envelope**  
As described by Terry Pratchett.  
A Discworld Artifact of only 99 within which there were 8 varieties of names & addresses.

Sold in December 2004 for £10.00 now changing hands for nearly £200.



The 2004 Hogswatch FDC Edition of 400  
Sold December 2004 for £2.50.  
Now selling for about £20.00



The 2005 Stampex launched February 2005.  
FDC from Discworld Cinderellas.  
500 will be produced at £2.50



## THE STORY OF THE STAMPS

As with everything we produce, in the beginning was the word, and these Discworld Stamps (or Cinderellas as this type of stamp are called) are no different. Stamps have always fascinated me, I have never really collected them as such, but I have always liked looking at them. They seem to have such an air of authority about them, in the same way that real money used to have, when a ten shilling note could spell a night of solid drinking, and you only saw a fiver on pay day. Money with style and real gravity, serious bits of paper that had to be housed in wallets the size of a wardrobe.

Stamps were like that, but with the added mystery of 'foreign'.

Stamps with the heads of kings, queens, dictators, presidents, with strange devices and flags, and all in the sort of colour you didn't get every day.

Of course all you ever saw in stamp books were fuzzy black images at the top of the page, it was in the cellophane packet that you got with it that had the real thing.

Stamps that had presided over letters of introduction, letters of love, letters of pain, letters of plenty, and of course letters of intent both good and bad.

You've only to read "Going Postal" to realize the degree of collaboration. As Terry was writing the book, so I was suggesting ideas and producing drawings. Some of the images were suggested by Terry and others resulted from deep and meaningful consultations over a pint or two.

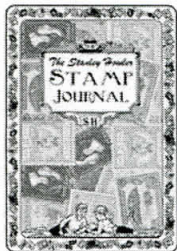
We consulted print historians, philatelists, stamp dealers and museums to get the design and production right.

From my rough sketches and layouts Colin Edwards; who knows the print game inside out, and is a bit of a lad with a Mac, knew a man who could wield a mean quill called Alan Batley.

They could do all the things I couldn't and between us we created the stamps you see today,

It was thanks to the rather splendid Bath Postal Museum that we were able to use their lineal perforator to trial our designs, it is incredibly ancient, but with our help they have got it working again.

The majority of the stamps have been produced by Joh. Enschedé. They were established in Haarlem (Netherlands) in 1703. It is widely recognized as one of Holland's finest printing houses. Enschedé prints banknotes and stamps for the Dutch government, fine art catalogues, and commercial high-quality work.

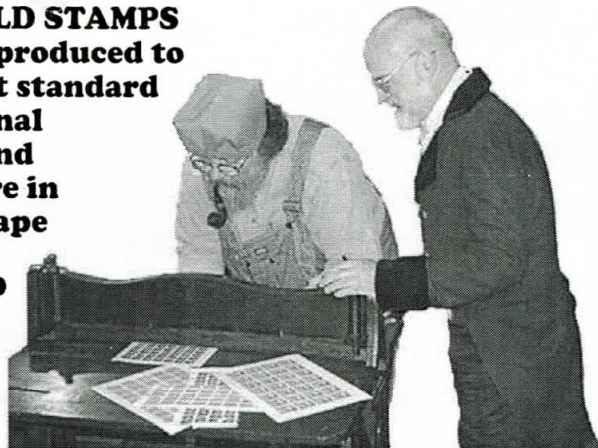


*The Stanley Howler Stamp Journal is the one way to be sure of knowing about all the offers & special edition FIRST DAY COVERS.*

*Each issue has a free and exclusive stamp, and back issues are available for subscribers.*

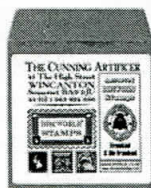
*Stanley Howler stamp albums are also available.*

**DISCWORLD STAMPS**  
have been produced to  
the highest standard  
from original  
artwork and  
will feature in  
the landscape  
of  
**DISCWORLD**  
for years  
to come.



A certain 'Gentleman of Letters' supervising the perforations of the first stamps

The Little



## BROWN ENVELOPE Assorted DISCWORLD<sup>®</sup> CINDERELLA STAMPS

The stamps contained in our  
**LITTLE BROWN  
ENVELOPE**



There are a random mixture of the types available plus a chance to get some of the rare hand perforated stamps and these could include some rare issues of the Tower of Art, The 'Eminence Gris, Penny Civic, or even the very, very rare \$5 triangle, or Thruppn'y Dreadful.

If you are lucky enough to find a \$5 Blue, then we would ask you to register this fact with us as there will only ever be 500 worldwide.

### What on earth is a 'Cinderella'?

It's not a stamp for a start; the correct term amongst serious collectors and philatelists is that of a 'Cinderella'.

A 'Cinderella is, and I quote:

"Local stamps, telegraph stamps, railway stamps, revenues/fiscals, forgeries, bogus and phantom issues. Christmas, Red Cross, TB and other charity seals, registration labels, advertisement and exhibition labels and many other items"

So it seems we are producing Cinderella's.

So far (30th Jan 2005) we have produced over 80,000 stamps. Some of the rare ones, most of which are those given away in the Little Brown Envelopes have changed hands for between £20 and £110 and a limited edition FDC for £180.

There is an open forum available on our web site, and collectors do

swap stamps.

Whatever you choose to call them, these 'stamps' are genuine **Discworld** artefacts, and should you find yourself in Ankh-Morpork without a penny to your name, these tiny pieces of beautifully decorated pieces of paper will act as a form of currency.



### THE CURRENT FRANKING STAMPS IN USE AS FROM DECEMBER 2004



**ANKH-MORPORK.**

This is the common frank for the city, and was the first one used. The design is taken from the city coat of arms & the original Post Office hat badge. Normally red, there have been other colours including black, but these are only struck when the ink pad has been stolen.

**STO KERRIG  
Post Office**

**STO KERRIG**

A town of the plains, about 40 miles from Ankh-Morpork and heavily dependent on cabbages & cabbage based products. A sub Post Office is in operation, the frank is normally red except when it's green.



**STO LAT**

About 20 miles from Ankh-Morpork. The second city to have it's own post station, and quick to employ a registered frank. Colour normally red but it has been known to be black, for similar reasons above.

**DO NOT, REPEAT NOT LICK**

..... T. Groat, Assistant Postmaster

**ANKH-MORPORK POST OFFICE. THE CAUTIONARY FRANK.**

Only used on the infamous 'Thruppn'y Dreadful' and as such very rare.

If encountered wash your hands thoroughly and go and lie down.

You may need a doctor or an undertaker, time will tell.



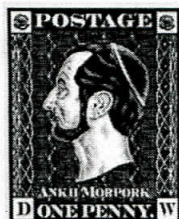
Used once on the Hogswatch First Day Cover on that date. Unlikely to occur again.



The ANKH-MORPORK Consulate.  
WINCANTON.

Only used for diplomatic mail.  
Always black, except when red.

## DISCWORLD STAMPS



41 The High Street,  
**Wincanton.**

Somerset. BA9 9JU

tel: 01 963 824 686

fax: 01 963 824 671

[www.discworldstamps.com](http://www.discworldstamps.com)