

Issued in the Year of the Complicated Monkey

| | | | |
|---|----------------------------------|---------------|------------------------|
| Regulation Red on a Powder Blue Field Ankh-Morpork Post Office in Black Outline in Frame Paly Red and Peach Chief POST OFFICE in Black bordered by Patrician Profile Sinister Red Dexter and Patrician Profile Dexter Red Sinister Base HALF PENNY Black bordered by ½ Black Dexter and Sinister. | | | |
| Stamp Name: | Post Office Half Penny Red | Common | SHS AM0238Aw |
| Region: | Ankh-Morpork | Availability: | Unlimited Availability |
| Perforation: | Wincanton 10/2cm/2cm | Width/Height: | 35 by 26 mm |
| Price: | 25p | Release Date: | 28 Jan 2011 |
| | | | |
| Stamp Name: | Post Office Half Penny Red motto | Sport | SHS AM0238Bw |
| Region: | Ankh-Morpork | Availability: | Sport found on sheet |
| Perforation: | Wincanton 10/2cm/2cm | Width/Height: | 35 by 26 mm |
| Price: | | Release Date: | 28 Jan 2011 |
| The motto is missing | | | |



SHS0238Aw



SHS0238Bw

Issued in the Year of the Complicated Monkey

Black and shades on White Fine Burlage field Mature Patrician Dexter Profile Chief POSTAGE V in Square White Canton and Canton Sinister Base ANKH-MORPORK ONE PENNY A in Square White Dexter M in Square White Sinister.

The five Festive variations available in the [a=shI0109.html/JWinter 2011 LBE[/a] having been a suggestion by archerinwood.

| | | |
|-------------------------------------|--------------------------------------|--------------|
| Stamp Name: Penny Patrician Black | Common | SHS AM0239Aw |
| Region: Ankh-Morpork | Availability: Unlimited Availability | |
| Perforation: Wincanton 10/2cm/2cm | Width/Height: 24 by 27 mm | |
| Price: 25p | Release Date: 28 Jan 2011 | |
| Stamp Name: Penny Patrician Black V | Sport | SHS AM0239Bw |
| Region: Ankh-Morpork | Availability: Sport found on sheet | |
| Perforation: Wincanton 10/2cm/2cm | Width/Height: 24 by 27 mm | |
| Price: | Release Date: 28 Jan 2011 | |

The V in the left hand upper square is mirrored.



SHS0239Aw



SHS0239Bw

Issued in the Year of the Complicated Monkey

| | |
|-----------------------------------|-------------------------------|
| Stamp Name: Festive Bearded | Variation |
| Region: Ankh-Morpork | Availability: Winter 2011 LBE |
| Perforation: Wincanton 10/2cm/2cm | Width/Height: 24 by 27 mm |
| Price: | Release Date: 7 Dec 2011 |

SHS AM0239Cw

The Patrician is wearing a false white beard. The two Vs in the top corners are swapped from the sport.

| | |
|-----------------------------------|-------------------------------|
| Stamp Name: Festive Snowfall | Variation |
| Region: Ankh-Morpork | Availability: Winter 2011 LBE |
| Perforation: Wincanton 10/2cm/2cm | Width/Height: 24 by 27 mm |
| Price: | Release Date: 7 Dec 2011 |

SHS AM0239Dw

Snowflakes are shown on the stamp. The two Vs in the top corners are swapped from the sport.

| | |
|-----------------------------------|-------------------------------|
| Stamp Name: Festive One Piggy | Variation |
| Region: Ankh-Morpork | Availability: Winter 2011 LBE |
| Perforation: Wincanton 10/2cm/2cm | Width/Height: 24 by 27 mm |
| Price: | Release Date: 7 Dec 2011 |

SHS AM0239Ew

The wording ONE PIGGY appears at the base of the stamp. The two Vs in the top corners are swapped from the sport.

| | |
|-----------------------------------|-------------------------------|
| Stamp Name: Festive Hoodie | Variation |
| Region: Ankh-Morpork | Availability: Winter 2011 LBE |
| Perforation: Wincanton 10/2cm/2cm | Width/Height: 24 by 27 mm |
| Price: | Release Date: 7 Dec 2011 |

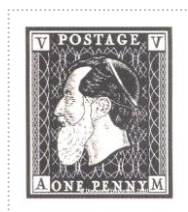
SHS AM0239Fw

The Patrician is wearing a black hood trimmed with white. The two Vs in the top corners are swapped from the sport.

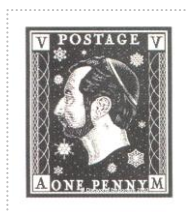
| | |
|-----------------------------------|-------------------------------|
| Stamp Name: Festive Bobble Hat | Variation |
| Region: Ankh-Morpork | Availability: Winter 2011 LBE |
| Perforation: Wincanton 10/2cm/2cm | Width/Height: 24 by 27 mm |
| Price: | Release Date: 7 Dec 2011 |

SHS AM0239Gw

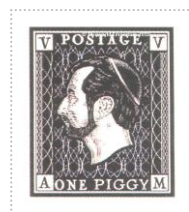
The Patrician is wearing a black pointed hat with white trim and white bobble. The two Vs in the top corners are swapped from the sport. Also know as the Archer's Cap after archerinwood who suggested the variation.



SHS0239Cw



SHS0239Dw



SHS0239Ew



SHS0239Fw



SHS0239Gw

Issued in the Year of the Complicated Monkey

Red on Cream Field Crenulated Frame bounding Two Hippos Royales Baillant Left Enchaîne, Right Couronne au Cou surmounted by Ankh Symbol supporting Shield with Book and Wizard's Hat and Owl Black Supported by Scroll with Motto QVANTI CANI CULA ILLE IN FENESTRA Chief Curved Scroll with POST OFFICE Black Bordered by Curved Shield with 2p Powder Blue on Red Supported by POSTAGE Dexter and REVENUE Dexter Base TWO PENCE Black on Powder Blue.

| | | |
|--|--------------------------------------|--------------|
| Stamp Name: Ankh Two Pence Red | Common | SHS AM0240Aw |
| Region: Ankh-Morpork | Availability: Unlimited Availability | |
| Perforation: Wincanton 10/2cm/2cm | Width/Height: 30 by 34 mm | |
| Price: 45p | Release Date: 28 Jan 2011 | |
| Stamp Name: Ankh Two Pence Red Postage | Sport | SHS AM0240Bw |
| Region: Ankh-Morpork | Availability: Sport found on sheet | |
| Perforation: Wincanton 10/2cm/2cm | Width/Height: 30 by 34 mm | |
| Price: | Release Date: 28 Jan 2011 | |

The word Postage on the left runs from top to bottom.

| | | |
|--|------------------------------------|--------------|
| Stamp Name: Ankh Two Pence Red Linsley | Sport | SHS AM0240Cw |
| Region: Ankh-Morpork | Availability: Sport found on sheet | |
| Perforation: Wincanton 10/2cm/2cm | Width/Height: 30 by 34 mm | |
| Price: | Release Date: 28 Jan 2011 | |

The letter L in CULA and the word ILLE are missing from the banner.
This was an unintended sport and results from the fact Bernard forgot he had created it.
Discovered by Linsley (Skaven)



SHS0240Aw



SHS0240Bw



SHS0240Cw

Issued in the Year of the Complicated Monkey

Dark Gray Hatching on Cream Morporkia Seated holding Ankh-Morpork Coat of Arms Sinister Dexter and Fork in Ascent Sinister in Curved frame Green Field in Oval Frame Bordered by POSTAGE PAID Upper FIVE PENCE Repeated around Canton Patrician Profile Black Sinister Canton Sinister Patrician Profile Black Dexter Base 5p Black in Curved Shield Dexter and Sinister.

| | | | |
|--------------|----------------------------|---------------|------------------------|
| Stamp Name: | Morporkia Five Pence Green | Common | SHS AM0241Aw |
| Region: | Ankh-Morpork | Availability: | Unlimited Availability |
| Perforation: | Wincanton 10/2cm/2cm | Width/Height: | 33 by 38 mm |
| Price: | 75p | Release Date: | 28 Jan 2011 |

| | | | |
|--------------|-----------------------------------|---------------|----------------------|
| Stamp Name: | Morporkia Five Pence Green Mantle | Sport | SHS AM0241Bw |
| Region: | Ankh-Morpork | Availability: | Sport found on sheet |
| Perforation: | Wincanton 10/2cm/2cm | Width/Height: | 33 by 38 mm |
| Price: | | Release Date: | 28 Jan 2011 |

Some of the patterning on the mantle is missing.



SHS0241Aw



SHS0241Bw

Issued in the Year of the Complicated Monkey

Dark Brown Hatching on Parchment Field Morporkia Seated holding Ankh-Morpork Coat of Arms Sinister Dexter and Fork in Ascent Sinister in Curved frame Brown Field in Oval Frame Bordered by POSTAGE PAID Upper TEN PENCE Repeated around Canton Patrician Profile Dark Brown Sinister Canton Sinister Patrician Profile Burgundy Dexter Base 10 Dark Brown in Curved Shield Dexter and Sinister.

| | | | |
|--------------|---------------------------|---------------|------------------------|
| Stamp Name: | Morporkia Ten Pence Brown | Common | SHS AM0242Aw |
| Region: | Ankh-Morpork | Availability: | Unlimited Availability |
| Perforation: | Wincanton 10/2cm/2cm | Width/Height: | 33 by 38 mm |
| Price: | 75p | Release Date: | 28 Jan 2011 |

| | | | |
|--------------|-----------------------------------|---------------|----------------------|
| Stamp Name: | Morporkia Ten Pence Brown Trident | Sport | SHS AM0242Bw |
| Region: | Ankh-Morpork | Availability: | Sport found on sheet |
| Perforation: | Wincanton 10/2cm/2cm | Width/Height: | 33 by 38 mm |
| Price: | | Release Date: | 28 Jan 2011 |

The lower handle of Morporkia's trident is missing.



SHS0242Aw



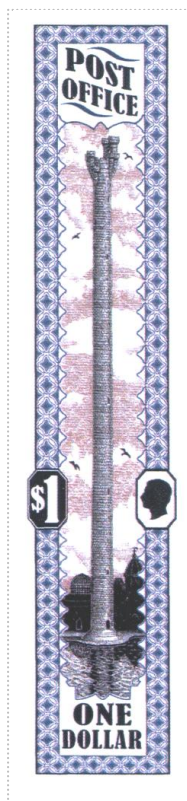
SHS0242Bw

Issued in the Year of the Complicated Monkey

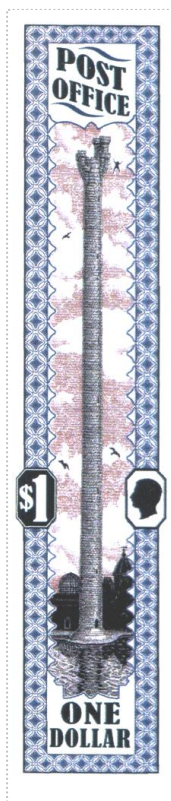
Gray and Postal Puce on Parchment Framed in Gray Patterning Tower Of Art on Puce Sky Bisecting the High Energy Building and the Main Hall and Reflecting Lake Two Birds Sinister and Two Birds Dexter Bordered by Columns Circle on Square Grey and Parchment with \$1 White in Octagonal Frame Black Midpoint Dexter and Patrician Profile White Dexter in Octagonal Frame Black Midpoint Sinister Chief POST OFFICE Black Base ONE DOLLAR Black.

The slight difference, 2mm, in width for the sports was pointed out to me by Larry Hart.

| | | |
|---|--------------------------------------|--------------|
| Stamp Name: \$1 Tower of Art | Common | SHS AM0243Aw |
| Region: Ankh-Morpork | Availability: Unlimited Availability | |
| Perforation: Wincanton 10/2cm/2cm | Width/Height: 24 by 105 mm | |
| Price: £1.05 | Release Date: 28 Jan 2011 | |
| <hr/> | | |
| Stamp Name: \$1 Tower of Art Falling 1 | Sport | SHS AM0243Bw |
| Region: Ankh-Morpork | Availability: LBE only | |
| Perforation: Wincanton 10/2cm/2cm | Width/Height: 22 by 105 mm | |
| Price: | Release Date: 28 Jan 2011 | |
| <hr/> | | |
| The upper bird is replaced by a falling man in a star jumped shape. | | |
| <hr/> | | |
| Stamp Name: \$1 Tower of Art Falling 2 | Sport | SHS AM0243Cw |
| Region: Ankh-Morpork | Availability: LBE only | |
| Perforation: Wincanton 10/2cm/2cm | Width/Height: 22 by 105 mm | |
| Price: | Release Date: 1 Apr 2011 | |
| <hr/> | | |
| The falling man is head first and about half way down the tower. | | |
| <hr/> | | |
| Stamp Name: \$1 Tower of Art Splash | Sport | SHS AM0243Dw |
| Region: Ankh-Morpork | Availability: LBE only | |
| Perforation: Wincanton 10/2cm/2cm | Width/Height: 22 by 105 mm | |
| Price: | Release Date: 5 Jul 2011 | |
| <hr/> | | |
| There is a splash in the water to the right of the tower | | |
| <hr/> | | |



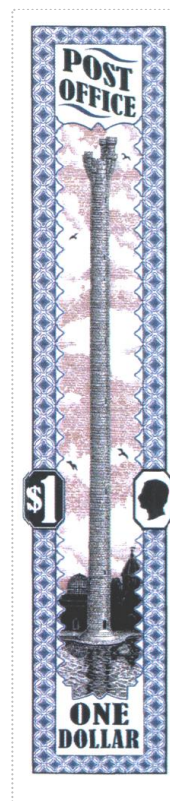
SHS0243Aw



SHS0243Bw



SHS0243Cw



SHS0243Dw

Issued in the Year of the Complicated Monkey

Pinks and Dark Blush on White Field Boned and Laced Corset encircled by curved banner bearing the motto nil volupti sine lucre Dark Blush on Pink Dexter and Sinister with furled mantle white surmounted by Aiguilles Croise with Yarn Entwined with Curved Banner bearing the word PENCE above the word postage Blush on Pink bordered by Number 3 White in dotted frame Blush Dexter and Sinister Base supported by a plinth bearing GUILD OF SEAMSTRESSES White on Dark Blush First made available in the [a=shl0096.html/]Valentine's Day[/a] LBE.

| | | | |
|--------------|-------------------------------|---------------|------------------------|
| Stamp Name: | Seamstress Three Penny Corset | Common | SHS AM0244Aw |
| Region: | Ankh-Morpork | Availability: | Unlimited Availability |
| Perforation: | Wincanton 10/2cm/2cm | Width/Height: | 40 by 45 mm |
| Price: | 45p | Release Date: | 14 Feb 2011 |

| | | | |
|--------------|--------------------------------------|---------------|----------------------|
| Stamp Name: | Seamstress Three Penny Corset Stitch | Sport | SHS AM0244Bw |
| Region: | Ankh-Morpork | Availability: | Sport found on sheet |
| Perforation: | Wincanton 10/2cm/2cm | Width/Height: | 40 by 45 mm |
| Price: | | Release Date: | 14 Feb 2011 |

The hearts at the top of the corset just above the needles have changed to cross-stitches.



SHS0244Aw



SHS0244Bw

Issued in the Year of the Complicated Monkey

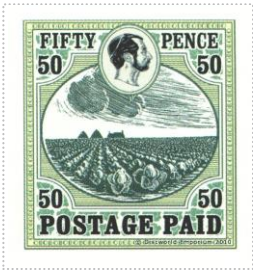
Greens on Parchment Field Stormy Scene of Cabbage Fields with House and Haystack in Black In oval Frame Chief FIFTY PENCE Black above 50 Black Dexter and Sinister Bisected by Patrician Profile Black Sinister in Oval Frame Base POSTAGE PAID Black surmounted by 50 Black Dexter and Sinister.

A variation of the stamp designed with Sheila Watkins.

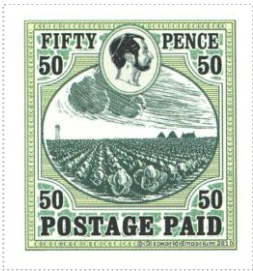
| | | | |
|--------------|---------------------------|---------------|------------------------|
| Stamp Name: | Cabbage Field Fifty Pence | Common | SHS AM0245Aw |
| Region: | Ankh-Morpork | Availability: | Unlimited Availability |
| Perforation: | Wincanton 10/2cm/2cm | Width/Height: | 33 by 35 mm |
| Price: | 45p | Release Date: | 7 Mar 2011 |

| | | | |
|--------------|---------------------------------|---------------|----------------------|
| Stamp Name: | Cabbage Field Fifty Pence Tower | Sport | SHS AM0245Bw |
| Region: | Ankh-Morpork | Availability: | Sport found on sheet |
| Perforation: | Wincanton 10/2cm/2cm | Width/Height: | 33 by 35 mm |
| Price: | | Release Date: | 7 Mar 2011 |

The hayricks and building have moved to the right and a clacks tower has appeared on the left.



SHS0245Aw



SHS0245Bw

Issued in the Year of the Complicated Monkey

Red on a pink stippled Floral Embellishment field Croix Quartered by 1, e, A and M in Circular Frame surrounded by fourfold ELIM :: and VR base White on Red
Patrician Profile Red Sinister Chief Motto POSTAGE White on Red.

The Elim, a denomination unique to Ankh-Morpork. Representing the smallest unit of currency in the city, or one sixteenth of a penny to be exact. Their coin counterpart may buy you:

'A candle stub, a small potato that's only a bit green. or an apple core that ain't been entirely et' (from Making Money).

In postal terms these pretty little stamps would likely cover all the little items that needed to travel the shortest distance in the longest time, or simply play their part in the de facto currency of stamps among the inhabitants of Discworld's mightiest city.

| | | | |
|--------------|----------------------|---------------|------------------------|
| Stamp Name: | One Elim Red | Common | SHS AM0246Aw |
| Region: | Ankh-Morpork | Availability: | Unlimited Availability |
| Perforation: | Wincanton 10/2cm/2cm | Width/Height: | 19 by 25 mm |
| Price: | 25p | Release Date: | 7 Mar 2011 |
| Stamp Name: | One Elim Red Whirled | Sport | SHS AM0246Bw |
| Region: | Ankh-Morpork | Availability: | Sport found on sheet |
| Perforation: | Wincanton 10/2cm/2cm | Width/Height: | 19 by 25 mm |
| Price: | | Release Date: | 7 Mar 2011 |

The central 1 e A M has been rotated through 180 degrees.



SHS0246Aw



SHS0246Bw

Issued in the Year of the Complicated Monkey

Obverse Black on Cream Field wording 'AFFIX STAMP HERE' with various designs Reverse various hues on white field Shield with motto 'Beggars' Chief and bearing the motto 'Moneta supervacanea magister?' and 'GUILD' Base

This is a Discworld Cinderella stamp.

During printing of the reverse, gummed 'shield' side on the stamp the gum affected the printer causing a variation in the colour and ultimately breaking the digital printer.

There are five designs on the obverse; Hatched, Rectangle, Perforated, Cornered and Art Deco.

There were originally to be three colours, Green, Red and Blue on the reverse but with the gum problem the each colour was transformed creating three extras hues Lime, Orange and Blue-Green.

The stamp size is varied.

The design in the shield is not that appears as the arms in the New Discworld Companion. The reverse side images are courtesy of Denise Roberts.

| | | |
|---------------------------------------|-------------------------------|--------------|
| Stamp Name: Beggars' Guild Hatched | Variation | SHS AM0247Aw |
| Region: Ankh-Morpork | Availability: April Fool 2011 | |
| Perforation: Wincanton 10/2cm/2cm | Width/Height: 34 by 34 mm | |
| Price: | Release Date: 1 Apr 2011 | |
| Stamp Name: Beggars' Guild Rectangle | Variation | SHS AM0247Bw |
| Region: Ankh-Morpork | Availability: April Fool 2011 | |
| Perforation: Wincanton 10/2cm/2cm | Width/Height: 34 by 34 mm | |
| Price: | Release Date: 1 Apr 2011 | |
| Stamp Name: Beggars' Guild Perforated | Variation | SHS AM0247Cw |
| Region: Ankh-Morpork | Availability: April Fool 2011 | |
| Perforation: Wincanton 10/2cm/2cm | Width/Height: 34 by 34 mm | |
| Price: | Release Date: 1 Apr 2011 | |
| Stamp Name: Beggars' Guild Cornered | Variation | SHS AM0247Dw |
| Region: Ankh-Morpork | Availability: April Fool 2011 | |
| Perforation: Wincanton 10/2cm/2cm | Width/Height: 34 by 34 mm | |
| Price: | Release Date: 1 Apr 2011 | |
| Stamp Name: Beggars' Guild Art Deco | Variation | SHS AM0247Ew |
| Region: Ankh-Morpork | Availability: April Fool 2011 | |
| Perforation: Wincanton 10/2cm/2cm | Width/Height: 34 by 34 mm | |
| Price: | Release Date: 1 Apr 2011 | |



SHS0247Aw



SHS0247Bw



SHS0247Cw



SHS0247Dw



SHS0247Ew

Issued in the Year of the Complicated Monkey

Teal on White field Lord Rodney Sepia in profile sinister in frame bearing the motto LORD RODNEY DUKE OF QUIRM with Shield bearing the motto 5p Chief Shield with motto Quirm White on Teal Base surrounded by furled embellishments.

| | | | |
|--------------|------------------------|---------------|------------------------|
| Stamp Name: | Quirm Five Pence | Common | SHS QU0248Aw |
| Region: | Quirm | Availability: | Unlimited Availability |
| Perforation: | Wincanton 10/2cm/2cm | Width/Height: | 23 by 33 mm |
| Price: | 30p | Release Date: | 30 Apr 2011 |
| Stamp Name: | Quirm Five Pence smile | Sport | SHS QU0248Bw |
| Region: | Quirm | Availability: | Sport found on sheet |
| Perforation: | Wincanton 10/2cm/2cm | Width/Height: | 23 by 33 mm |
| Price: | | Release Date: | 30 Apr 2011 |



SHS0248Aw



SHS0248Bw

Issued in the Year of the Complicated Monkey

Magnolia overlaid with Burgundy and Black Barry field Capital V surmounting Capital M Royal Blue Bends on Royal Blue Paly Field in Circular Frame bearing the wording POSTAGE Royal Blue on Magnolia Upper Sinister and Dexter and LANCRE KINGDON Magnolia on Burgundy Lower Crown Burgundy in Royal Blue Paly field Chief bounded by 5p Royal Blue on Magnolia Sinister and Dexter Chief.

Appeared on the Royal Wedding Commemorative Cover issued to celebrate the wedding of King Verance II and Queen Magrat

| | | | |
|--------------|---------------------------------|---------------|-------------------|
| Stamp Name: | Lancre Kingdom Five Pence | Common | SHS LA0249Aw |
| Region: | Lancre | Availability: | Royal Wedding LBE |
| Perforation: | Wincanton 10/2cm/2cm | Width/Height: | 29 by 34 mm |
| Price: | | Release Date: | 30 Apr 2011 |
| Stamp Name: | Lancre Kingdom Five Pence crown | Sport | SHS LA0249Bw |
| Region: | Lancre | Availability: | Royal Wedding LBE |
| Perforation: | Wincanton 10/2cm/2cm | Width/Height: | 29 by 34 mm |
| Price: | | Release Date: | 30 Apr 2011 |

The crown is missing the central point.



SHS0249Aw



SHS0249Bw

Issued in the Year of the Complicated Monkey

White Line Art on Dark Burnt Umber Field Woodcut Hermit Elephant enclosed in Dotted Frame bordered by Grimacing Natives Arms Hanging Dexter Arms Folded Sinister with Supporting Columns of Six Lozenges Motto 'Postage' above 'HERMIT ELEPHANT' separated by a Dotted Line bounded by 05WB in Dotted Square Frame Sinister and Dexter Chief Motto 'HOWONDALAND' In Rectangular Dotted Frame Base

Produced in Ankh-Morpork for issue from the port of Zambingo for use in the field by the brave explorers of the Ankh-Morpork Trespassers Society.

The stamp features the native Hermit Elephant who has a thin skins and is renowned for appropriating the huts of the natives as a means of protection. As the elephant grows it requires larger huts much like the Hermit Crab.

The stamp has not seen a great deal of use due to the survival rate in the dark and mysterious jungles of the area.

| | | | |
|--------------|----------------------------------|---------------|-----------------|
| Stamp Name: | Howondaland 50 Wichit Bead | Common | SHS HO0250Aw |
| Region: | Howondaland | Availability: | 100th LBE issue |
| Perforation: | Wincanton 10/2cm/2cm | Width/Height: | 28 by 34 mm |
| Price: | 50p | Release Date: | 23 May 2011 |
| Stamp Name: | Howondaland 50 Wichit Bead | Sport | SHS HO0250Bw |
| Region: | Howondaland | Availability: | 100th LBE issue |
| Perforation: | Wincanton 10/2cm/2cm | Width/Height: | 28 by 34 mm |
| Price: | | Release Date: | 23 May 2011 |
| Stamp Name: | Howondaland 50 Wichit Bead Brown | Variation | SHS HO0250Cw |
| Region: | Howondaland | Availability: | LBE only |
| Perforation: | Wincanton 10/2cm/2cm | Width/Height: | 28 by 34 mm |
| Price: | | Release Date: | 23 May 2011 |

The colour is more brown than burgundy
It is not known if there is a sport of this variation.



SHS0250Aw



SHS0250Bw



SHS0250Cw

Issued in the Year of the Complicated Monkey

Light purple on White Field Golden Bull of Om surmounted on Lilies on Dark Purple Field bounded by Doric Columns Sinister and Dexter with Paramount Arch with the motto THE GOLDEN BULL OF OM Dark Purple and Orbs Over Numeric 1 Dark Purple Sinister and Dexter Chief Motto OMNIA POSTAGE PAID Dark Purple Bounded by 1 OBAL Sinister and Dexter Base.

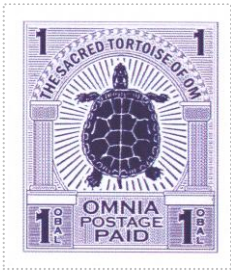
Each stamp is accompanied by an inspiring quote selected by The Omnian Tract Society (Second Omnian IV Text)
First issued in the Full of Om's Blessings LBE.

A new inspiring quote was issued with the Great Om Temple appeal letter.

| | | | |
|--------------|------------------------|---------------|------------------------|
| Stamp Name: | Omnian One Obal | Common | SHS OM0251Aw |
| Region: | Omnia | Availability: | Unlimited Availability |
| Perforation: | Wincanton 10/2cm/2cm | Width/Height: | 30 by 35 mm |
| Price: | 40p | Release Date: | 6 Jun 2011 |
| Stamp Name: | Omnian One Obal Turtle | Variation | SHS OM0251Bw |
| Region: | Omnia | Availability: | LBE only |
| Perforation: | Wincanton 10/2cm/2cm | Width/Height: | 30 by 35 mm |
| Price: | | Release Date: | 6 Jun 2011 |



SHS0251Aw



SHS0251Bw

Issued in the Year of the Complicated Monkey

Aqua blue on White Field Hirsute Guy de Yoyo in Mongolian Hat and Fur Trim Profile Sinister in Oval frame Crowned with the Ankh-Morpork Trespassers Society ? Bounded by curved banner with the motto POSTAGE REVEUE Dark Aqua blue on White Profile of Patrician White Sinister and Dexter surmounting the mirrored scene of a Waterfall Sinister and Dexter Curved Shadowed motto 'GUY DE YOYO' White Chief Ankh-Morpork Hippos above wording 'ONE DOLLAR' Dark Aqua blue on White bordered by \$1 White on Dark Aqua blue Sinister and Dexter all surrounded by Dotted Frame.

Fourth in the Explorers series.

| | | |
|---|---------------------------|--------------|
| Stamp Name: \$1 Explorer - Guy de Yoyo | Common | SHS AM0252Aw |
| Region: Ankh-Morpork | Availability: LBE only | |
| Perforation: Wincanton 10/2cm/2cm | Width/Height: 30 by 40 mm | |
| Price: 50p | Release Date: 5 Jul 2011 | |
| Stamp Name: \$1 Explorer - Guy de Yoyo hippos | Sport | SHS AM0252Bw |
| Region: Ankh-Morpork | Availability: LBE only | |
| Perforation: Wincanton 10/2cm/2cm | Width/Height: 30 by 40 mm | |
| Price: | Release Date: 5 Jul 2011 | |

The AM Hippo Coat of Arms is flipped over



SHS0252Aw



SHS0252Bw

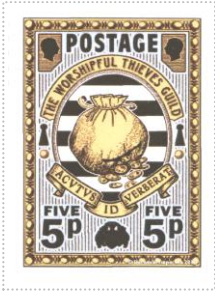
Issued in the Year of the Complicated Monkey

Golds on a Light Grey Paly field Leather Money Sack tied at the top with bottom split spilling coins on Black and White Barry of 9 in Oval frame Curved Banner with Motto 'THE WORSHIPFUL THIEVES GUILD' Black on Gold Chief Folded Banner with Motto 'ACVTVS ID VERBERAT' Black on Gold Base bordered by Keyhole black with roundel d'Or Patrician Profile Black on Gold Sinister and Dexter Chief Ankh-Morpork Hippo Arms Bordered by Wording FIVE 5P Black Base Sinister and Dexter in a Rectangular Frame Orb d'Or and Lozenges

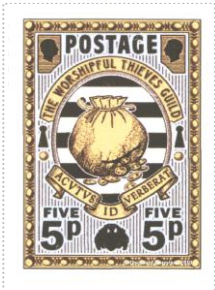
| | | |
|---------------------------------------|--------------------------------------|--------------|
| Stamp Name: Thieves' Guild Five pence | Common | SHS AM0253Aw |
| Region: Ankh-Morpork | Availability: Unlimited Availability | |
| Perforation: Wincanton 10/2cm/2cm | Width/Height: 28 by 38 mm | |
| Price: 40p | Release Date: 27 Jul 2011 | |

| | | |
|--|------------------------------------|--------------|
| Stamp Name: Thieves' Guild Five pence coin | Sport | SHS AM0253Bw |
| Region: Ankh-Morpork | Availability: Sport found on sheet | |
| Perforation: Wincanton 10/2cm/2cm | Width/Height: 28 by 38 mm | |
| Price: | Release Date: 27 Jul 2011 | |

The lowest coin above ID has moved to the left of the bag



SHS0253Aw



SHS0253Bw

Issued in the Year of the Complicated Monkey

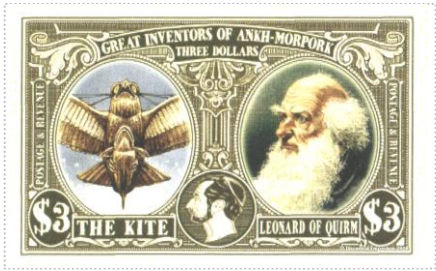
Old Brass on Rich Cream field Curved Scroll with the Motto GREAT INVENTORS OF ANKH-MORPORK over THREE DOLLARS Yellow on Burnt Gold Chief Image of The Kite in Oval Frame with Motto THE KITE in Rectangular Frame Dexter Image of Leonard of Quirm in Oval frame with Motto LEONARD OF QUIRM in Rectangular Frame Sinister bordered by Frame Vertical with the Motto POSTAGE & REVENUE Image of Patrician in Oval Frame Profile Dexter Centred with \$3 in Oval Frame Dexter and Sinister Base

Stamps designed by Ian Mitchell with Images by Peter Dennis

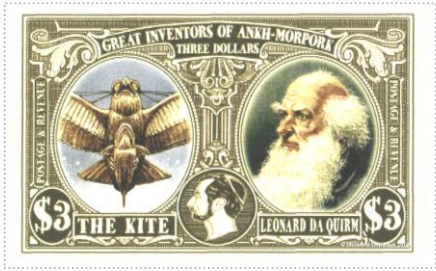
Whilst looking for the sport Larry discovered that the bars at the bottom of the stamp varied. Is this a secret message for a new invention that will open letters but can be used as a weapon or just an order from the Klatch take-away?

| | | |
|--|--------------------------------------|--------------|
| Stamp Name: \$3 Great Inventors - Leonard of Quirm | Common | SHS AM0254Aw |
| Region: Ankh-Morpork | Availability: Unlimited Availability | |
| Perforation: Wincanton 10/2cm/2cm | Width/Height: 57 by 35 mm | |
| Price: £1.25 | Release Date: 15 Aug 2011 | |
| Stamp Name: \$3 Great Inventors - Leonard DA Quirm | Sport | SHS AM0254Bw |
| Region: Ankh-Morpork | Availability: Sport found on sheet | |
| Perforation: Wincanton 10/2cm/2cm | Width/Height: 57 by 35 mm | |
| Price: | Release Date: 15 Aug 2011 | |

The name of LEONARD OF QUIRM has been amended to LEONARD DA QUIRM



SHS0254Aw



SHS0254Bw

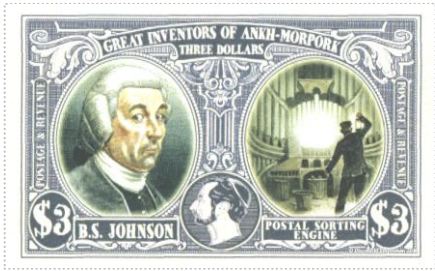
Issued in the Year of the Complicated Monkey

Lavender on Rich Cream field Curved Scroll with the Motto GREAT INVENTORS OF ANKH-MORPORK over THREE DOLLARS Chief Image of B. S. Johnson in Oval Frame with Motto B. S. Johnson in Rectangular Frame Dexter Image of the Postal Sorting Engine in Oval frame with Motto POSTAL SORTING ENGINE in Rectangular Frame Sinister bordered by Frame Vertical with the Motto POSTAGE & REVENUE Image of Patrician in Oval Frame Profile Dexter Centred with \$3 in Oval Frame Dexter and Sinister Base

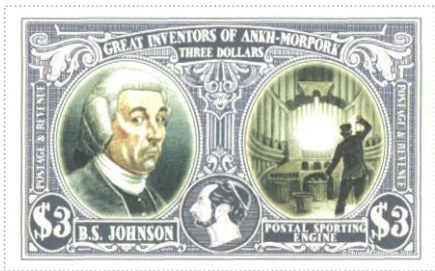
Stamps designed by Ian Mitchell with Images by Peter Dennis

| | | |
|--|--------------------------------------|--------------|
| Stamp Name: \$3 Great Inventors - B S Johnson | Common | SHS AM0255Aw |
| Region: Ankh-Morpork | Availability: Unlimited Availability | |
| Perforation: Wincanton 10/2cm/2cm | Width/Height: 57 by 35 mm | |
| Price: £1.25 | Release Date: 15 Aug 2011 | |
| Stamp Name: \$3 Great Inventors - B S Johnson sporting | Sport | SHS AM0255Bw |
| Region: Ankh-Morpork | Availability: Sport found on sheet | |
| Perforation: Wincanton 10/2cm/2cm | Width/Height: 57 by 35 mm | |
| Price: | Release Date: 15 Aug 2011 | |

The wording POSTAL SORTING ENGINE has changed to POSTAL SPORTING ENGINE



SHS0255Aw



SHS0255Bw

Issued in the Year of the Complicated Monkey

Shades of Blue on White field Numerical 11 above PENCE Dark Blue bordered in White offset shadowed bounded by Roundels White bordered by Dark Blue on a field of fine Blue Burlage in an Octagonal Frame White in Rectangular Frame with REVENUE Blue Shadowed on White bounded by Letter A Dexter and Letter M Sinister Blue on White Chief supported by Columns on Roundels Sinister and Dexter REVENUE Blue Shadowed on White bounded by Letter V Dexter and Letter R Sinister Blue on White Base.

Issued as part of the Dave's Stamp and Pin Exchange Postal Pack.

| | | | |
|--------------|----------------------|---------------|---|
| Stamp Name: | Eleven Pence revenue | Common | SHS AM0256Aw |
| Region: | Ankh-Morpork | Availability: | Dave's Stamp and Pin Exchange Postal Pack |
| Perforation: | Wincanton 10/2cm/2cm | Width/Height: | 20 by 22 mm |
| Price: | | Release Date: | 8 Sep 2011 |



SHS0256Aw

Issued in the Year of the Complicated Monkey

Shades of Coffee on Cream Lozenge Phoenix Wings Displayed Erect with Plume Profile Dexter Rising in ornate Maroon Frame Klatchian Script Dexter 2 Wol
Sinister Klatch Base

First issued in the Klatch it if You Kan LBE

There appears to be an area of lightening on some of the stamps and colour variation on the sheet.

| | | |
|-----------------------------------|--------------------------------------|--------------|
| Stamp Name: Klatch Two Wol | Common | SHS KL0257Aw |
| Region: Klatch | Availability: Unlimited Availability | |
| Perforation: Wincanton 10/2cm/2cm | Width/Height: 42 by 42 mm | |
| Price: 45p | Release Date: 19 Sep 2011 | |

| | | |
|-----------------------------------|------------------------------------|--------------|
| Stamp Name: Klatch Two Wol Beak | Sport | SHS KL0257Bw |
| Region: Klatch | Availability: Sport found on sheet | |
| Perforation: Wincanton 10/2cm/2cm | Width/Height: 42 by 42 mm | |
| Price: | Release Date: 19 Sep 2011 | |

The lower part of the beak is missing



SHS0257Aw



SHS0257Bw

Issued in the Year of the Complicated Monkey

Light purple on White Field Golden Bull of Om surmounted on Lilies on Dark Purple Field bounded by Doric Columns Sinister and Dexter with Paramount Arch with the motto THE GOLDEN BULL OF OM Dark Purple and Orbs Over Numeric 1 Dark Purple Sinister and Dexter Chief Motto OMNIA POSTAGE PAID Dark Purple Bounded by 1 OBOL Sinister and Dexter Base.

A revised version of the Omnian 1 Obal stamp.

Stamp Name: Omnian 1 Obol

Region: Omnia

Perforation: Wincanton 10/2cm/2cm

Price:

Common

SHS OM0258Aw

Availability: Green Cabbage Trading Scheme exchange

Width/Height: 30 by 35 mm

Release Date: 1 Jul 2011

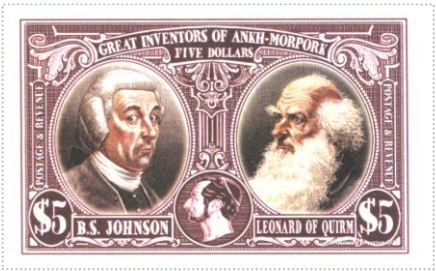


SHS0258Aw

Issued in the Year of the Complicated Monkey

Deep Burgundy on Rose Wine field Curved Scroll with the Motto GREAT INVENTORS OF ANKH-MORPORK over FIVE DOLLARS Rose Wine on Deep Burgundy Chief Image of B S Johnson in Oval Frame with Motto B.S. JOHNSON in Rectangular Frame Dexter Image of Leonard of Quirm in Oval frame with Motto LEONARD OF QUIRM in Rectangular Frame Sinister bordered by Frame Vertical with the Motto POSTAGE & REVENUE Image of Patrician in Oval Frame Profile Dexter Centred with \$5 in Oval Frame Dexter and Sinister Base

| | | | |
|--------------|-----------------------------------|---------------|---------------|
| Stamp Name: | \$5 Great Inventors Double Header | Common | SHS AM0259Aw |
| Region: | Ankh-Morpork | Availability: | SH Journal 25 |
| Perforation: | Wincanton 10/2cm/2cm | Width/Height: | 57 by 35 mm |
| Price: | | Release Date: | 11 Oct 2011 |



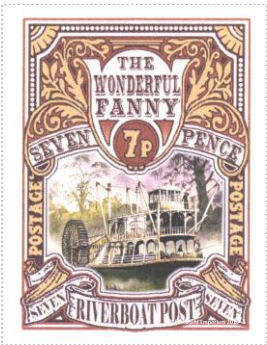
SHS0259Aw

Issued in the Year of the Complicated Monkey

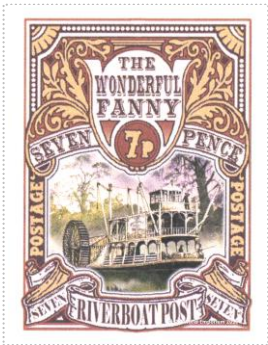
Ochre and Earth Yellow on Desert Sand Field Drawing of The Wonderful Fanny enclosed in a Frame 'POSTAGE' in columns Sinister and Dexter Ochre on Bistre Waved Banner with Motto 'SEVEN RIVERBOAT POST SEVEN' Bistre on Burnt Sand Base Curved Banner with Motto 'SEVEN PENCE' Bistre on Burnt Sand surmounted by Urn Frame with the Legend 'THE WONDERFUL FANNY' Bistre on Burnt Sand above Roundel 7p Yellow Earth on Ochre Supported by Flora Arrangement Yellow Earth on Ochre Chief in Rectangular Frame.

| | | | |
|--|------------------------------------|---------------|------------------------|
| Stamp Name: | Seven Pence Wonderful Fanny | Common | SHS QU0260Aw |
| Region: | Quirm | Availability: | Unlimited Availability |
| Perforation: | Wincanton 10/2cm/2cm | Width/Height: | 35 by 45 mm |
| Price: | 75p | Release Date: | 17 Oct 2011 |
| Stamp Name: | Seven Pence Wonderful Fanny P | Sport | SHS QU0260Bw |
| Region: | Quirm | Availability: | Sport found on sheet |
| Perforation: | Wincanton 10/2cm/2cm | Width/Height: | 35 by 45 mm |
| Price: | | Release Date: | 17 Oct 2011 |
| The P in the central frame is filled in. | | | |
| Stamp Name: | Seven Pence Wonderful Fanny invite | Variation | SHS QU0260Cw |
| Region: | Quirm | Availability: | Snuff launch invite |
| Perforation: | Wincanton 10/2cm/2cm | Width/Height: | 35 by 45 mm |
| Price: | | Release Date: | 17 Oct 2011 |

The stamp has an overall redder hue and the selvage is white.
There is probably a sport version of this stamp stuck on an invite but the chances are the owner is not a Discworld Stamp collector so it my never appear for sale.



SHS0260Aw



SHS0260Bw



SHS0260Cw

Issued in the Year of the Complicated Monkey

Stamp Name: Seven Pence Wonderful Fanny Rejection
Region: Quirm
Perforation: Imperforated
Price:

Imperfection
Availability: Green Cabbage Trading Scheme exchange
Width/Height: 35 by 45 mm
Release Date: 17 Oct 2011

SHS QU0260Du

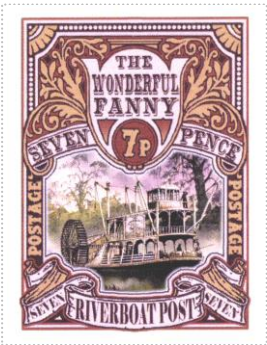
The colouring has a pinkish hue.
The stamp was submitted to the Man himself and after due consideration he said they were getting close.
The stamp is only available on a sheet

Stamp Name: Seven Pence Wonderful Fanny Rejected sport
Region: Quirm
Perforation: Imperforated
Price:

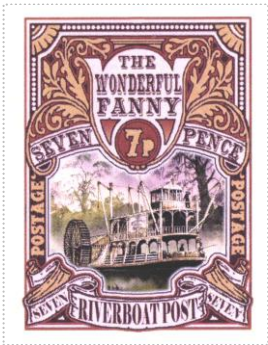
Imperfection
Availability: Green Cabbage Trading Scheme exchange
Width/Height: 35 by 45 mm
Release Date: 17 Oct 2011

SHS QU0260Eu

The P in the central frame is filled in.



SHS0260Du



SHS0260Eu

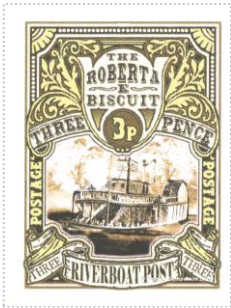
Issued in the Year of the Complicated Monkey

Olive and Khaki on Wheat Field Image The Roberta E Biscuit enclosed in a Frame 'POSTAGE' in columns Sinister and Dexter Olive on Dark Olive Waved Banner with Motto 'SEVEN RIVERBOAT POST SEVEN' Dark Olive on Wheat Base Curved Banner with Motto 'SEVEN PENCE' Dark Olive on Wheat surmounted by Urn Frame with the Legend 'THE ROBERTA E BISCUIT' Dark Olive on Wheat above Roundel Khaki on Olive Supported by Flora Arrangement Khaki on Olive Chief in Rectangular Frame.

Transworld, the publishers, had asked me to design a stamp to go on the invitations for the Launch of Snuff, featuring 'the boat'.... I took this to mean The Wonderful Fanny, so I dutifully got cracking on some designs, sent Peter a brief for the artwork (after he pointed out the mistakes on my first draft!). We took the design and the original painting over to Terry, he was very pleased and gave us the thumbs up (only cost us a bubble and squeak and a brandy). I contacted Transworld to tell them that I was about to send the Wonderful Fanny stamp over to them, to which they said... 'surely you mean the Roberta E Biscuit stamp'.... Bugger! I had failed to check which boat they actually meant. Out comes my colouring-in set, trying as hard as I could to match Peter's style for the first stamp, the ink did fly. Some hours later, the Roberta E Biscuit was done. However by this time they had seen the Wonderful Fanny stamp and were happy with it as it was, and decided to go with that. Hence, we ended up with a brace of boats for our range.

| | | |
|---|--------------------------------------|--------------|
| Stamp Name: Three Pence Roberta E Biscuit | Common | SHS QU0261Aw |
| Region: Quirm | Availability: Unlimited Availability | |
| Perforation: Wincanton 10/2cm/2cm | Width/Height: 30 by 40 mm | |
| Price: 50p | Release Date: 17 Oct 2011 | |
| Stamp Name: Three Pence Roberta E Biscuit P | Sport | SHS QU0261Bw |
| Region: Quirm | Availability: Sport found on sheet | |
| Perforation: Wincanton 10/2cm/2cm | Width/Height: 30 by 40 mm | |
| Price: | Release Date: 17 Oct 2011 | |

The E in Roberta E Biscuit has been rotated 90 clockwise and the P in POSTAGE on the right-hand side is filled in



SHS0261Aw



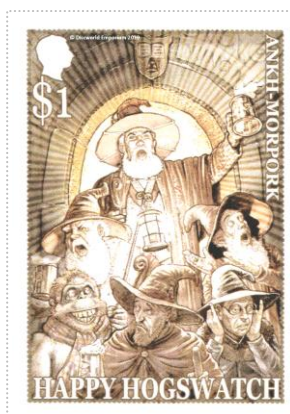
SHS0261Bw

Issued in the Year of the Complicated Monkey

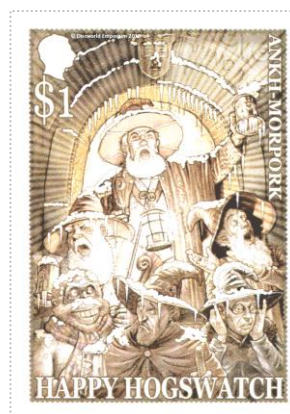
Browns on a White Field Unseen University Clock Tower Door with Wizards Disgorged Archchancellor Ridcully Flagon Enleve Farmost Senior Wrangler Dexter Bursar Sinister Librarian Gris with Lantern Filament Dexter Stibbons Disquieted Sinister Rincewind Impaled Foremost Patrician Profile \$1 Canton Sinister ANKH-MORPORK Descending Canton HAPPY HOGSWATCH Base

A rather grand Hogswatch Special issue featuring Peter Dennis' 'Hogswatch Carollers', which is as large and lively as it's subjects. This stamp is produced exclusively for the festive season and won't be around for long!

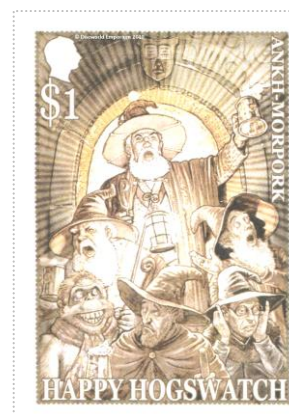
| | | |
|---|--------------------------------------|--------------|
| Stamp Name: \$1 Unseen Hogswatch | Common | SHS AM0262Aw |
| Region: Ankh-Morpork | Availability: Unlimited Availability | |
| Perforation: Wincanton 10/2cm/2cm | Width/Height: 38 by 54 mm | |
| Price: £1.00 | Release Date: 26 Nov 2011 | |
| Stamp Name: \$1 Unseen Hogswatch Freeze | Sport | SHS AM0262Bw |
| Region: Ankh-Morpork | Availability: Sport found on sheet | |
| Perforation: Wincanton 10/2cm/2cm | Width/Height: 38 by 54 mm | |
| Price: | Release Date: 26 Nov 2011 | |
| Snow and icicles can be seen on the door and wizards. | | |
| Stamp Name: \$1 Unseen Hogswatch Snowball | Imperfection | SHS AM0262Cw |
| Region: Ankh-Morpork | Availability: Sport found on sheet | |
| Perforation: Wincanton 10/2cm/2cm | Width/Height: 38 by 54 mm | |
| Price: | Release Date: 26 Nov 2011 | |
| A white spot, like a snowball, about Ridcully's hat. | | |



SHS0262Aw



SHS0262Bw



SHS0262Cw

Issued in the Year of the Complicated Monkey

Warm Browns on Dark Cream Field Hogfather surmounting field of Leaves Patrician Profile Dexter Cream on Dark Brown Canton 50p Cream on Dark Brown Canton Sinister Letter A Script Cream on Dark Brown Dexter Base Letter M Cream on Dark Brown Base Sinister

A rich and leafy 'Green Man' Hogfather stamp from the A-M.P.O featuring the artwork of Ian Mitchell, and a rather striking sport. Exclusive to the festive season of 2011, this beautiful stamp won't be around for long!

| | | | |
|--|---------------------------------|---------------|------------------------|
| Stamp Name: | Hogswatch Fifty Pence Hogfather | Common | SHS AM0263Aw |
| Region: | Ankh-Morpork | Availability: | Unlimited Availability |
| Perforation: | Wincanton 10/2cm/2cm | Width/Height: | 35 by 37 mm |
| Price: | 50p | Release Date: | 26 Nov 2011 |
| Stamp Name: | Hogswatch Fifty Pence Death | Sport | SHS AM0263Bw |
| Region: | Ankh-Morpork | Availability: | Sport found on sheet |
| Perforation: | Wincanton 10/2cm/2cm | Width/Height: | 35 by 37 mm |
| Price: | | Release Date: | 26 Nov 2011 |
| The face of Hogfather has been replaced with Death | | | |



SHS0263Aw



SHS0263Bw