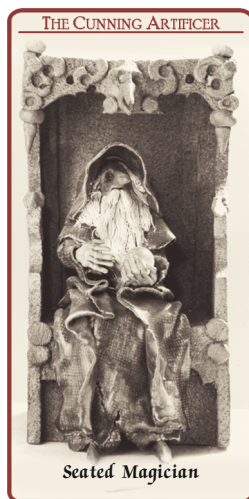


1



Seated Magician

2

Wizard with
Candleholder

3



Troll Pot

4

Hatted Troll
Candle-holders

5



Viking Warrior

THE CUNNING ARTIFICER

**Bernard Pearson's
CLARE CRAFT POTTERY
Collection**

A SERIES OF 20 PICTURE CARDS
DEPICTING SOME OF THE ORIGINAL
CERAMIC SCULPTURES CREATED BY
BERNARD PEARSON DURING THE 1980s

1. Seated Magician

A cloaked and bearded figure seated on a great rock-hewn throne. He holds a crystal ball, his cowl covering his head.

Size approx. 35cm. The throne is slab built from Craft-Crank clay with a red iron oxide wash. The figure is made from grogged stoneware, glazed after bisque firing, and the beard is fine porcelain.

THE CUNNING ARTIFICER
41 THE HIGH STREET, WINCANTON
SOMERSET, BA9 9JU
www.discworldemporium.com

THE CUNNING ARTIFICER

**Bernard Pearson's
CLARE CRAFT POTTERY
Collection**

A SERIES OF 20 PICTURE CARDS
DEPICTING SOME OF THE ORIGINAL
CERAMIC SCULPTURES CREATED BY
BERNARD PEARSON DURING THE 1980s

**2. Wizard with
Candleholder**

A standing figure with a finely textured cloak and extravagantly pointed hat. In his hands a container designed to hold a standard candle.

Size approx. 18cm. Handmade from stoneware and finished in a variety of glazes all of which were produced to Bernard's recipes in the studio. The beards were made of porcelain or fine, dark terracotta clay.

THE CUNNING ARTIFICER
41 THE HIGH STREET, WINCANTON
SOMERSET, BA9 9JU
www.discworldemporium.com

THE CUNNING ARTIFICER

**Bernard Pearson's
CLARE CRAFT POTTERY
Collection**

A SERIES OF 20 PICTURE CARDS
DEPICTING SOME OF THE ORIGINAL
CERAMIC SCULPTURES CREATED BY
BERNARD PEARSON DURING THE 1980s

3. Troll Pot

A hand built, cylindrical, pot decorated with an extravagantly bearded face. These pots were designed for use as pencil containers. They were in production from 1973 until 1985 and over the years hundreds were made.

Even so, each troll pot was individually hand made and no two were ever the same.

Size approx. 12cm. Hand built from grogged stoneware clay with an external oxide wash and glazed internally.

THE CUNNING ARTIFICER
41 THE HIGH STREET, WINCANTON
SOMERSET, BA9 9JU
www.discworldemporium.com

THE CUNNING ARTIFICER

**Bernard Pearson's
CLARE CRAFT POTTERY
Collection**

A SERIES OF 20 PICTURE CARDS
DEPICTING SOME OF THE ORIGINAL
CERAMIC SCULPTURES CREATED BY
BERNARD PEARSON DURING THE 1980s

**4. Hatted Troll
Candle-holders**

A hand built cylindrical pot decorated with a bearded face and topped with a monstrous broad-brimmed hat designed to hold a candle at the apex. Some of these had an additional scone and bracket in the hat band to hold an additional candle.

Size approx. 24cm. Hand built from stoneware clay. The base was oxide washed the hat finished in a variety of glazes unique to the studio.

THE CUNNING ARTIFICER
41 THE HIGH STREET, WINCANTON
SOMERSET, BA9 9JU
www.discworldemporium.com

THE CUNNING ARTIFICER

**Bernard Pearson's
CLARE CRAFT POTTERY
Collection**

A SERIES OF 20 PICTURE CARDS
DEPICTING SOME OF THE ORIGINAL
CERAMIC SCULPTURES CREATED BY
BERNARD PEARSON DURING THE 1980s

5. Viking Warrior

A standing figure wearing an elaborate horned helmet, holding an axe in one hand and a shield in the other. One of a series of Viking warriors designed for humorous effect rather than martial competence.

Size approx. 18cm. Made from fine stoneware clay. The shield and axe were unglazed in contrast to the highly glazed cloak and helmet. Beards were made from porcelain or dark terracotta clay.

THE CUNNING ARTIFICER
41 THE HIGH STREET, WINCANTON
SOMERSET, BA9 9JU
www.discworldemporium.com

6



Toadstool Elf

7



Woodland Musicians

8

Toadstool
Elfin Musician

9



The Henge Builder

10



The Duellists

THE CUNNING ARTIFICER

**Bernard Pearson's
CLARE CRAFT POTTERY
Collection**

A SERIES OF 20 PICTURE CARDS
DEPICTING SOME OF THE ORIGINAL
CERAMIC SCULPTURES CREATED BY
BERNARD PEARSON DURING THE 1980s

6. Toadstool Elf

A small elfin figure perched high
on a toadstool. He holds his
tobacco pipe in his hands as he
gazes in meditative mood across
the landscape.

One of a series of toadstool figures
created during this period
Size approx. 26cm.

The toadstool is slab built from a
grogged Stoneware clay set into a
base of Craft Crank. The stem and
base is oxide brushed and the top
highly glazed and fired under
reduction conditions for a unique
glaze finish.

THE CUNNING ARTIFICER
41 THE HIGH STREET, WINCANTON
SOMERSET, BA9 9JU
www.discworldemporium.com

THE CUNNING ARTIFICER

**Bernard Pearson's
CLARE CRAFT POTTERY
Collection**

A SERIES OF 20 PICTURE CARDS
DEPICTING SOME OF THE ORIGINAL
CERAMIC SCULPTURES CREATED BY
BERNARD PEARSON DURING THE 1980s

7. Woodland Musicians

A pair of bearded and hatted
elfin figures sitting together on
a tree stump playing musical
instruments.

Size approx. 17cm. The tree
stump is made from coarse
grogged stoneware, the figures
from a fine stoneware body and
the musical instruments from
porcelain. Only the figures are
glazed and the piece is made
and fired as one unit.

THE CUNNING ARTIFICER
41 THE HIGH STREET, WINCANTON
SOMERSET, BA9 9JU
www.discworldemporium.com

THE CUNNING ARTIFICER

**Bernard Pearson's
CLARE CRAFT POTTERY
Collection**

A SERIES OF 20 PICTURE CARDS
DEPICTING SOME OF THE ORIGINAL
CERAMIC SCULPTURES CREATED BY
BERNARD PEARSON DURING THE 1980s

**8. Toadstool
Elfin Musician**

One of a series of Toadstools
figures created at this time. In this
case the elfin figure seated on the
top is playing a musical
instrument. The darkly bearded
figure has the usual pointy hat and
shoes and has a horn to his lips.

Size approx. 27cm. The Toadstool
is slab built from grogged
stoneware clay set into a Craft
Crank base. The stem and base are
oxide brushed and the top is
glazed and fired under reduction
conditions for a unique glaze.

THE CUNNING ARTIFICER
41 THE HIGH STREET, WINCANTON
SOMERSET, BA9 9JU
www.discworldemporium.com

THE CUNNING ARTIFICER

**Bernard Pearson's
CLARE CRAFT POTTERY
Collection**

A SERIES OF 20 PICTURE CARDS
DEPICTING SOME OF THE ORIGINAL
CERAMIC SCULPTURES CREATED BY
BERNARD PEARSON DURING THE 1980s

9. The Henge Builder

A tall bearded figure wearing a
rough textured tunic and
assembling a pile of large
boulders. This figure is unusual in
that he has no hat and apart from
the shoes the figure is unglazed.

Size approx. 22cm. The boulders
are hand built from coarse grogged
stoneware clay and the figure from
a finer stoneware. There is an
overall iron and manganese oxide
wash. Very few of this range were
ever produced.

THE CUNNING ARTIFICER
41 THE HIGH STREET, WINCANTON
SOMERSET, BA9 9JU
www.discworldemporium.com

THE CUNNING ARTIFICER

**Bernard Pearson's
CLARE CRAFT POTTERY
Collection**

A SERIES OF 20 PICTURE CARDS
DEPICTING SOME OF THE ORIGINAL
CERAMIC SCULPTURES CREATED BY
BERNARD PEARSON DURING THE 1980s

10. The Duellists

This special piece was produced
for an exhibition in 1984. It
comprises a pair of knights in
helmet and armour standing back
to back weapons at the ready.

The armour and weapons are
depicted with great accuracy and
every detail is picked out in the
fine glazing. Size 28cm. Made
from a toasted fine stoneware clay.
Special effects were achieved by
using a high concentration of metal
oxides and firing under reduction
to give unique glaze finishes.

THE CUNNING ARTIFICER
41 THE HIGH STREET, WINCANTON
SOMERSET, BA9 9JU
www.discworldemporium.com

11



Elfin Astronomer

12



Arboreal Gnomes

13



The Great Wizard

14



Toadstool Candelabra

15



Siege Machine

THE CUNNING ARTIFICER

**Bernard Pearson's
CLARE CRAFT POTTERY
Collection**

A SERIES OF 20 PICTURE CARDS
DEPICTING SOME OF THE ORIGINAL
CERAMIC SCULPTURES CREATED BY
BERNARD PEARSON DURING THE 1980s

11. Elfin Astronomer

This stargazer sits on one toadstool looking through his enormous telescope which is mounted on a tripod on the other. He is surrounded by books and scrolls, his pipe and tobacco and jar of grog. There is much fine detail which is picked out in the careful glazing.

Size approx. 22cm. Hand built from fine stoneware clay glazed and fired in reduction conditions. The base of the toadstool is made of unglazed craft crank

THE CUNNING ARTIFICER
41 THE HIGH STREET, WINCANTON
SOMERSET, BA9 9JU
www.discworldemporium.com

THE CUNNING ARTIFICER

**Bernard Pearson's
CLARE CRAFT POTTERY
Collection**

A SERIES OF 20 PICTURE CARDS
DEPICTING SOME OF THE ORIGINAL
CERAMIC SCULPTURES CREATED BY
BERNARD PEARSON DURING THE 1980s

12. Arboreal Gnomes

Mischievous and amusing characters emerge from the boles of ancient tree stumps. Though part of a series, each one is unique in construction. The careful blend of two different unglazed clays fired to stoneware make an unusual and attractive piece.

Size approx. 12cm. The tree stumps are formed from Craft Crank and the figures from a fine toasted stoneware. The whole is washed with metal oxides and fired to stoneware as one unit.

THE CUNNING ARTIFICER
41 THE HIGH STREET, WINCANTON
SOMERSET, BA9 9JU
www.discworldemporium.com

THE CUNNING ARTIFICER

**Bernard Pearson's
CLARE CRAFT POTTERY
Collection**

A SERIES OF 20 PICTURE CARDS
DEPICTING SOME OF THE ORIGINAL
CERAMIC SCULPTURES CREATED BY
BERNARD PEARSON DURING THE 1980s

13. The Great Wizard

A large and imposing figure holding a spell book and armed with a fine sword. The great wizard has a long white beard flowing in the wind, a large brimmed pointed hat and a heavy cloak. He has a great buckled belt around his waist and magic talismans hanging around his neck. Size approx. 43 cm. Made from a grogged stoneware, glazed in fine detail and fired in a reduction atmosphere. To make a piece of this size and detail is a real test of the potters skill and not all survived the firing process.

THE CUNNING ARTIFICER
41 THE HIGH STREET, WINCANTON
SOMERSET, BA9 9JU
www.discworldemporium.com

THE CUNNING ARTIFICER

**Bernard Pearson's
CLARE CRAFT POTTERY
Collection**

A SERIES OF 20 PICTURE CARDS
DEPICTING SOME OF THE ORIGINAL
CERAMIC SCULPTURES CREATED BY
BERNARD PEARSON DURING THE 1980s

14. Toadstool Candelabra

A large toadstool surmounted by three elfin figures each holding, in one hand, a candle sconce and in the other a crystal ball. The small bearded figures which have textured cowls and robes, sit facing the rim of the toadstool with their backs together. The stem and base of the toadstool are unglazed, the top of the toadstool and the figures are finished in Iron and Cobalt glazes

Size approx. 33cm.

THE CUNNING ARTIFICER
41 THE HIGH STREET, WINCANTON
SOMERSET, BA9 9JU
www.discworldemporium.com

THE CUNNING ARTIFICER

**Bernard Pearson's
CLARE CRAFT POTTERY
Collection**

A SERIES OF 20 PICTURE CARDS
DEPICTING SOME OF THE ORIGINAL
CERAMIC SCULPTURES CREATED BY
BERNARD PEARSON DURING THE 1980s

15 Siege Machine

A piece in the
"Articles of Ordnance & Engines of War"
Series

The piece comprises a wheeled "wooden" siege tower manned by three armed soldiers.

Size approx. 41cm. This piece was made for an exhibition in 1984. The siege tower is slab built from craft crank and decorated with stoneware strapping and detail all of which is finished in a metal oxide. The figures are made from fine stoneware and glazed.

THE CUNNING ARTIFICER
41 THE HIGH STREET, WINCANTON
SOMERSET, BA9 9JU
www.discworldemporium.com

16



Cannoneer

17



Great Elven Knight

18



Crock of Gold

19



Elven Forge

20



Great Merlin

THE CUNNING ARTIFICER

**Bernard Pearson's
CLARE CRAFT POTTERY
Collection**

A SERIES OF 20 PICTURE CARDS
DEPICTING SOME OF THE ORIGINAL
CERAMIC SCULPTURES CREATED BY
BERNARD PEARSON DURING THE 1980s

16. Cannoneer

A small figure is loading a cannonball into a mortar. The wheeled carriage and gun is constructed with accurate detail and the figure, armed with a sword, is wearing armour. Made for an exhibition in 1984 and now in a private collection.

Size 17cm. Made from a fine toasted stoneware clay and finished with a mixture of strong metal oxides and glazes. Fired under reduction atmosphere.

THE CUNNING ARTIFICER
41 THE HIGH STREET, WINCANTON
SOMERSET, BA9 9JU
www.discworldemporium.com

THE CUNNING ARTIFICER

**Bernard Pearson's
CLARE CRAFT POTTERY
Collection**

A SERIES OF 20 PICTURE CARDS
DEPICTING SOME OF THE ORIGINAL
CERAMIC SCULPTURES CREATED BY
BERNARD PEARSON DURING THE 1980s

17. Great Elven Knight

An tall and imposing fully armoured figure with helmet and shield. One of a series of no more than twenty such figures each individually made and finished with great detail. They were some of the finest and most costly items created, the process taking several days to complete. This particular Knight has a horned helmet and holds both an axe and a shield. A sword is attached to a belt around his waist.

Size approx. 44cm.

THE CUNNING ARTIFICER
41 THE HIGH STREET, WINCANTON
SOMERSET, BA9 9JU
www.discworldemporium.com

THE CUNNING ARTIFICER

**Bernard Pearson's
CLARE CRAFT POTTERY
Collection**

A SERIES OF 20 PICTURE CARDS
DEPICTING SOME OF THE ORIGINAL
CERAMIC SCULPTURES CREATED BY
BERNARD PEARSON DURING THE 1980s

18. Crock of Gold

The mythical Crock of Gold at the end of the rainbow. One of the largest and most complex pieces ever produced in the studio. It combines the potter's skill of throwing with hand built sculpture.

There were just eight of these large pieces produced, some came with four leprechauns and a fitting for a light in the base of the crock.

Size approx 36cm.

THE CUNNING ARTIFICER
41 THE HIGH STREET, WINCANTON
SOMERSET, BA9 9JU
www.discworldemporium.com

THE CUNNING ARTIFICER

**Bernard Pearson's
CLARE CRAFT POTTERY
Collection**

A SERIES OF 20 PICTURE CARDS
DEPICTING SOME OF THE ORIGINAL
CERAMIC SCULPTURES CREATED BY
BERNARD PEARSON DURING THE 1980s

19. Elven Forge

A small figure sits in the shade of a toadstool holding a large hammer and surrounded by the tools of his trade which include an anvil.

A variation of the toadstool series, in this case the figure is beneath rather than on top of the cap.

Size approx. 24cm. The toadstool was slab built from stoneware and the figure modelled from the same material. The stem and base of the toadstool are finished in a metal oxide wash and the top glazed and fired under a reduction atmosphere.

THE CUNNING ARTIFICER
41 THE HIGH STREET, WINCANTON
SOMERSET, BA9 9JU
www.discworldemporium.com

THE CUNNING ARTIFICER

**Bernard Pearson's
CLARE CRAFT POTTERY
Collection**

A SERIES OF 20 PICTURE CARDS
DEPICTING SOME OF THE ORIGINAL
CERAMIC SCULPTURES CREATED BY
BERNARD PEARSON DURING THE 1980s

20 Great Merlin

An iconic image which was created with variations over a period of years. This Merlin is simply clad in flowing textured robes. He has a cowl over his head, his beard is white and long and in his hands he holds a crystal ball.

Size approx 36cm Made from grogged stoneware clay, glazed and fired in a reduction atmosphere.

THE CUNNING ARTIFICER
41 THE HIGH STREET, WINCANTON
SOMERSET, BA9 9JU
www.discworldemporium.com