

## THE COLLECTION: A DEFINITIVE STUDY JUNE 2005.

	Description	Size (mm)	Perfs	Rarity
Half Penny Post Office Red	Pimpernell Orange on a white face. Patrician in profile opposite denomination. Central design of the Original Post Office before restoration.	33*20	Bath perfs (12/2cm) Wincanton perfs (10/2cm) And machine perfs (13/2cm)	Unlimited
Penny Patrician	Mostly black showing the head of Lord Vetinari in profile. Has a fine burelage (pattern) to the background.	20*25	Bath perfs (12/2cm) Wincanton perfs (10/2cm) And machine perfs (13.5/2cm)	Unlimited
Unperforated Penny Patrician	Original design of the Penny Black and the Gris- the gris ending up with more grey hair, the penny black with less. Unperforated, distributed to the first 500 subscribers to the Stanley Howler Stamp Journal.	20*25	None	500 only, to the first 500 journal subscribers.
Penny Red	Indian red in colour, this stamp was trialed by Teemer & Spools but not adopted by the Post Office.	20*25	Wincanton perfs (10/2cm)	Distributed with the first journal issue.
Red Nosed Patrician	100 only produced to raise money for Comic Relief Red Nose Day 2005.	20*25	Wincanton perfs (10/2cm)	98 finally claimed, 2 donated for LBE comp cover
Eminence Gris	Early design of the Penny Patrician, hair is much greyer than the later Penny Patrician version. Some variation in print quality (banding) seen between different stamps.	20*25	Bath perfs (12/2cm) Wincanton perfs (10/2cm)	Rare, but not limited. In 1 in 20 LBEs.
Penny Civic	Easily recognizable because the paper is thinner (80gm) than the normal Penny's, and the printing process is one we have never used before. Cartouches (corner plates) bear the letters H-V & A-M.	20*25	Wincanton perfs (10/2cm) for stamps in LBEs.	19600 including sports. 250 sheets (56 stamps each) sold unperf'd, 100 sheets split and in LBEs.
Penny Civic Sport	Due to the printing process used, one stamp on every sheet has slight thinning on the cartouch letters.	20*25	Wincanton perfs (10/2cm)	100 in LBEs
2p Ankh	Ripe plum purple overall. Central motif of Ankh-Morpork coat of arms. Significant numeral in bottom centre.	30*35	Bath perfs (12/2cm) Wincanton perfs (10/2cm) And machine perfs (13/2cm)	Unlimited
5p Morporkia Blue	Dual blue tints over a white background with central numeral at top. Under which is Morporkia girdled, fork in the assent.	35*40	Bath perfs (12/2cm) Wincanton perfs (10/2cm) And machine perfs (13/2cm)	Unlimited
10p Morporkia Green	Brassica tints over a white background with central numeral at top. Under which is Morporkia girdled, fork in the assent.	35*40	Bath perfs (12/2cm) Wincanton perfs (10/2cm) And machine perfs (13/2cm)	Unlimited
\$1 Tower of Art Common	Depicting the Unseen University Tower of Art amid its scholastic environment. A most unusual stamp with reports of transfiguration within the engraving. The TOA has been printed in at least three separate runs. The first run can be distinguished most easily by the lack of any printing on the selvage (the edges of the sheet) while the second version does have printing. The latest print run includes the new sports and has an upside down falling man in the picture in the gutter. The left side of the gutter reads: ANKH-MORPORK - THE YEAR OF THE PRAWN while the right side reads: TEEMER & SPOOLS - TOWER OF ART - ONE DOLLAR.	20*100	Bath perfs (12/2cm) Wincanton perfs (10/2cm)	Unlimited
\$1 Tower of Art falling man	The first transfiguration, with the bird to the right of the tower replaced by a man in free fall. Has top selvage only.	20*100	Bath perfs (12/2cm) Wincanton perfs (10/2cm)	1 in 20 LBEs
\$1 Tower of Art Splash	The second transfiguration, with a small splash visible in the water near the base of the tower. Has top and right-edge selvage.	20*100	Bath perfs (12/2cm) Wincanton perfs (10/2cm)	1 in 20 LBEs
\$1 Tower of Art falling man (New)	Similar to the original falling man, except the upper bird on the left hand side of the tower has level horizontal wings.	20*100	Bath perfs (12/2cm) Wincanton perfs (10/2cm)	Produced to maintain LBE ratio.
\$1 Tower of Art Splash (New)	Again similar to the original splash, except the splash is of a different shape and size. It is also slightly closer to the shore.	20*100	Bath perfs (12/2cm) Wincanton perfs (10/2cm)	Produced to maintain LBE ratio.
Assassins 3p	Also known as the Thrupn'y Resurrection. A rich blue and purple, on white body paper. Gummed.	37*42	Wincanton perfs (10/2cm)	Unlimited
Assassins 3p ungummed	As above, except issued ungummed following some unfortunate incidents and a funeral.	37*42	Wincanton perfs (10/2cm)	The first 1500 produced were ungummed.
Assassins Post Paid	Also known as the Thrupn'y Dreadful or Zombie stamp. Again a rich blue and purple on a white dead body paper. Reverse features a yellow backing carrying a red skull and crossbones.	37*42	Wincanton perfs (10/2cm)	2000, 1 in 40 LBEs. Always found in a bag or wrapper.



Assassins Post Paid (White back)	As above, except tail of the vine near the dagger is missing. Oh, and the back is also plain white. Originally found in some Hogswatch FDCs.	37*42	Wincanton perfs (10/2cm)	40 produced, of which 10 escaped in Hogswatch FDCs.
Merchant Farthing	Sponsored by the Candlewick Makers and Oil Men. It is maroon on a cream body, and of a diamond shape, featuring the Guild shield with ship, cockerel, bulls head and purse, centred by an owl on an Ankh.	25*25	Wincanton perfs (10/2cm)	Unlimited
Merchant Farthing (sport)	A variant of the above. The hull of the ship is reversed (the sail is still normal). Most easily seen by the rudder now being at the bow (front)!	25*25	Wincanton perfs (10/2cm)	1 in the sheet of 70.
Merchant Penny Farthing	Sponsored by the Grocers and Purveyors of Dry Goods. An umber stamp on a cream body, featuring barrels and sacks of named goods. The stamp value is featured in cartouches on lower left and right.	25*37	Wincanton perfs (10/2cm)	Unlimited
Merchant Penny Farthing (sport)	A variant of the above. The value in the cartouches is missing its p suffix ("1¼" rather than "1¼ p").	25*37	Wincanton perfs (10/2cm)	1 in the sheet of 49.
Merchant Three Pence	Sponsored by the Fishmongers. Surprisingly enough, features fish. Has "three pence" along the bottom, with "3p" in cartouches in the lower left and right corners.	25*37	Wincanton perfs (10/2cm)	Unlimited
Merchant Three Pence (sport)	A variant of the above. The "three pence" text along the bottom is lacking its space, reading "threepence".	25*37	Wincanton perfs (10/2cm)	1 in the sheet of 49.
Merchant Fifty Pence	Half dollar (sponsored by the Butchers and Tripe Merchants) appropriately featuring meat and sausages. Green in colour, with fifty pence in text across the bottom with the value in cartouches.	25*37	Wincanton perfs (10/2cm)	Unlimited
Merchant Fifty Pence (sport)	A variant, with a plate defect causing the word "dollar" to read "dullar" in the cartouches.	25*37	Wincanton perfs (10/2cm)	1 in the sheet of 49.
\$5 Brass Bridge (Blue Triangle)	Triangular in shape, with an empire blue base tint giving way to octarine hints. Central design of the famous Brass Bridge over the River Ankh, on which can be seen a wizard, watchman, small boy and an assassin. Patrician in profile to the right, facing left.	48*25	Bath perfs (12/2cm) Wincanton perfs (10/2cm)	490, in LBEs only
\$5 Brass Bridge (Blue Triangle Sport)	As above, except the head of the Patrician is upside down.	48*25	Bath perfs (12/2cm) Wincanton perfs (10/2cm)	10 exist
50p Cabbage Green	A special brassica edition showing the verdant glory of the Sto Plains. Patrician opposite a cabbage rampant (plaque).	30*35	Machine perfs (13.5/2cm)	On Waterstones cover, mint stamp was also given away in Journal #2 and GOFAD newsletter.
Skunk Stamp	A variant of the 50p cabbage green, "perfumed" with the scent of cabbage by pTerry himself (aided and assisted by Rob and Bernard). Hopefully still to be found in their sealed jars with City Watch forensic department seal and evidence label.	30*35	Machine perfs (13.5/2cm)	20 produced, 3 believed currently in circulation.
Hogswatch 3p	Features a Paul Kidby drawing of the Hogfather with green leaf framing and a pink sausage border.	49*38	Wincanton perfs (10/2cm)	2500 plus 400 used on covers
1p Duty Paid	Features the coat of arms of Ankh-Morpork. Black printing on a green background, with the text "Duty Paid" and the value of 1p.	24*35	Wincanton perfs (10/2cm)	Unlimited, to be found in 1 in 10 LBEs and used on tobacco wrappers.
½p Twoshirts	Features a portrait of a cabbage, in a red-purple colour. Features the text "Farthing" flanked by ½p in a ribbon banner along the bottom.	21*26	Wincanton perfs (10/2cm)	Unlimited.
½p Twoshirts	Features a portrait of a cabbage, in a green colour. Features the text "Half Pence" flanked by ½p in a ribbon banner along the bottom.	21*26	Wincanton perfs (10/2cm)	Unlimited.
2p Twoshirts	Celebrates the Cabbage Macerating Festival. Features a sepia picture two gentlemen treading cabbages in a large vat.	34*35	Wincanton perfs (10/2cm)	Unlimited.
2p Twoshirts (sport)	A variant, with the faces of the men swapped over. Most obvious in the moustaches.	34*35	Wincanton perfs (10/2cm)	1 per sheet of 35.
Green Cabbage Trading Stamp	Image of a cabbage in white on a green shield-shaped background on yellow rays. For the oldies amongst you, it bears an odd resemblance to a Green Shield Trading Stamp (odd that, isn't it?).	22*30	Wincanton perfs (10/2cm)	By redemption of common stamps.
\$5 Merchants Guild Special	Regarded as a promissory note against Guild funds. Features a sepia picture of Ankh-Morpork docks. Also features the Guild shield.	32*62	Wincanton perfs (10/2cm)	Unlimited. Not found in LBEs.

*With Grateful thanks to all who worked to compile this magnificent overview of the collection.  
Discworld Stamps. Wincanton, Somerset. BAP 9JU 01963 824 686. [www.discworldstamps.com](http://www.discworldstamps.com)*



Stamp	Description	Size (mm)	Perfs	Rarity
Penny Civic Cabbage	Produced from an old design dating from August 2004 this stamp is quite rare in that it has been printed in order to accompany issue 3 (July 2005) of the Stanley Howler Stamp Journal. Cartouches (corner plates) bear the letters A – M above being cabbages.	20*25	Wincanton perfs (10/2cm)	Printed to accompany issue 3 of the Stanley Howler Stamp Journal
Penny Patrician Campaign	These stamps were printed and set into a booklet bearing the title 'SPECIAL MILITARY ISSUE' and they were first issued at the 2005 CCDE which had the theme of 'Monstrous Regiment'. There are six stamps to a booklet, one of which is a sport. Cartouches (corner plates) bear the letters A – M above being crossed sabres.	20*25	Wincanton perfs (10/2cm)	1000 books have been printed
Penny Patrician Campaign Sport	There is one sport within the six stamps that make up the book. Cartouches (corner plates) bear the letters A – M above being crossed sabres with the hilts reversed down.	20*25	Wincanton perfs (10/2cm)	1000 have been printed within the 1000 books of stamps.
TOA Weathervane Sport	The weathervane on the right-hand back ground building points to the right rather than the left.	20*100	Wincanton perfs (10/2cm)	Produced to maintain LBE ratio.
2p Seamstress	Known as the 'Tuppny upright' because of the nature of the stamp and its denomination. A 'broken Dove' over the Guild Shield on a bed of hearts. The Red Lamp of the profession is surmounted by two crossed needles, the threads of which form a lovers knot within the protective body of the shield, thus symbolising the 'secret contract' which is the byword of this most respected profession.	25*35	Wincanton perfs (10/2cm)	Unlimited
2p Seamstress Sport	All five stars on the shield are inverted.	25*35	Wincanton perfs (10/2cm)	1 per sheet of 42
Zlobenian 1 Zloty	The Principality of Zlobenia issued this stamp. Some were used by Ankh-Morpork troops attached to the alliance forces under Lord Rust during the Borogravian Zlobenian border dispute. The design shows the hand painted clog and the crown and the crown and the eagle of the old kingdom.	18*25	Wincanton perfs (10/2cm)	Unlimited
Zlobien sport	The feet of the eagle are completely black.	18*25	Wincanton perfs (10/2cm)	1 per sheet of 32
\$1 Leshp	A blue/grey stamp that shows the island of Rockall within a frame that is all Discworld bearing as it does a reference to the island that nearly caused a war as described in the novel 'Jingo'.	30*34	Machine perfs (13.5/2cm)	Unlimited
<b>Erratum Sheet 1</b>				
\$1 Tower of Art falling man (New)	Similar to the original falling man, except the upper bird on the left hand side of the tower has level horizontal wings.	20*100	Wincanton perfs (10/2cm) only	Produced to maintain LBE ratio.
\$1 Tower of Art Splash (New)	Again similar to the original splash, except the splash is of a different shape and size. It is also slightly closer to the shore.	20*100	Wincanton perfs (10/2cm) only	Produced to maintain LBE ratio.

Addendum 1 by Helen Hill.  
The Stanley Howler Journal IV  
October 2005.





Stamp	Description	Size (mm)	Perfs	Rarity
Penny Civic Cabbage	Produced from an old design dating from August 2004 this stamp is quite rare in that it has been printed in order to accompany issue 3 (July 2005) of the Stanley Howler Stamp Journal. Cartouches (corner plates) bear the letters A – M above being cabbages.	20*25	Wincanton perfs (10/2cm)	Printed to accompany issue 3 of the Stanley Howler Stamp Journal
Penny Patrician Campaign	These stamps were printed and set into a booklet bearing the title 'SPECIAL MILITARY ISSUE' and they were first issued at the 2005 CCDE which had the theme of 'Monstrous Regiment'. There are six stamps to a booklet, one of which is a sport. Cartouches (corner plates) bear the letters A – M above being crossed sabres.	20*25	Wincanton perfs (10/2cm)	1000 books have been printed
Penny Patrician Campaign Sport	There is one sport within the six stamps that make up the book. Cartouches (corner plates) bear the letters A – M above being crossed sabres with the hilts reversed down.	20*25	Wincanton perfs (10/2cm)	1000 have been printed within the 1000 books of stamps.
TOA Weathervane Sport	The weathervane on the right-hand back ground building points to the right rather than the left.	20*100	Wincanton perfs (10/2cm)	Produced to maintain LBE ratio.
2p Seamstress	Known as the 'Tuppny upright' because of the nature of the stamp and it's denomination. A 'broken Dove' over the Guild Shield on a bed of hearts. The Red Lamp of the profession is surmounted by two crossed needles, the threads of which form a lovers knot within the protective body of the shield, thus symbolising the 'secret contract' which is the byword of this most respected profession.	25*35	Wincanton perfs (10/2cm)	Unlimited
2p Seamstress Sport	All five stars on the shield are inverted.	25*35	Wincanton perfs (10/2cm)	1 per sheet of 42
Zlobenian 1 Zloty	The Principality of Zlobenia issued this stamp. Some were used by Ankh-Morpork troops attached to the alliance forces under Lord Rust during the Borogravian Zlobenian border dispute. The design shows the hand painted clog and the crown and the crown and the eagle of the old kingdom.	18*25	Wincanton perfs (10/2cm)	Unlimited
Zlobien sport	The feet of the eagle are completely black.	18*25	Wincanton perfs (10/2cm)	1 per sheet of 32
\$1 Leshp	A blue/grey stamp that shows the island of Rockall within a frame that is all Discworld bearing as it does a reference to the island that nearly caused a war as described in the novel 'Jingo'.	30*34	Machine perfs (13.5/2cm)	Unlimited
<b>Erratum Sheet 1</b>				
\$1 Tower of Art falling man (New)	Similar to the original falling man, except the upper bird on the left hand side of the tower has level horizontal wings.	20*100	Wincanton perfs (10/2cm) only	Produced to maintain LBE ratio.
\$1 Tower of Art Splash (New)	Again similar to the original splash, except the splash is of a different shape and size. It is also slightly closer to the shore.	20*100	Wincanton perfs (10/2cm) only	Produced to maintain LBE ratio.

Addendum 1 by Helen Hill.  
The Stanley Howler Journal IV  
October 2005.





	Description	Size (mm)	Perfs	Rarity
Assassin Antidote Stamp.	A rich blue and purple, on white body paper. Tail of the vine near the dagger is missing. The back is a checked pattern of green dots. Accompanied by a statement on beige paper.	37 * 42	Wincanton perfs (10/2cm).	175 in LBEs.
Thieves Guild 4p (Old).	Tones of yellow on a white background showing the Guild building. At top a cut purse with coins falling out.	30 * 43	Wincanton perfs (10/2cm).	Withdrawn.
Thieves Guild 4p Sport (Old).	Top left corner of sheet. Only three upstairs windows on the left hand side of the building.	30 * 43	Wincanton perfs (10/2cm).	1 per sheet of 32. Withdrawn.
Thieves Guild 6p (Old).	Tones of blue on a white background showing the Guild building. At top a cut purse with coins falling out	30 * 43	Wincanton perfs (10/2cm).	Withdrawn.
Thieves Guild 6p Sport (Old).	Bottom left corner of sheet. Top of cross is missing.	30 * 43	Wincanton perfs (10/2cm).	1 per sheet of 32. Withdrawn.
Thieves Guild 4p (New).	Tones of yellow on a white background showing the Guild building. At top a cut purse with coins falling out.	34 * 46	Wincanton perfs (10/2cm).	Unlimited.
Thieves Guild 4p Sport (New).	Top left corner of sheet. Upstairs window on the left hand side of the building are inverted.	34 * 46	Wincanton perfs (10/2cm).	1 per sheet of 30.
Thieves Guild 6p (New).	Tones of blue on a white background showing the Guild building. At top a cut purse with coins falling out.	34 * 46	Wincanton perfs (10/2cm).	Unlimited.
Thieves Guild 6p Sport (New).	Bottom left corner of sheet. Top of cross is missing.	34 * 46	Wincanton perfs (10/2cm).	1 per sheet of 30.
Ten Pence Koom Valley (Dwarf).	Shades of green on a white background. Scene showing Koom Valley with Dwarves chasing Trolls.	32 * 40	Wincanton perfs (10/2cm).	Unlimited.
Ten Pence Koom Valley (Troll).	Shades of green on a white background. Scene showing Koom Valley with Trolls chasing Dwarves.	32 * 40	Wincanton perfs (10/2cm).	Unlimited.
Red 10p Morporkia.	Red version of the Morporkia 10p stamp, produced in error for the ride to Sto Lat cover, subsequently additional stamps printed to accompany journal four.	35 * 40	Machine perfs (13.5/2cm).	Accompanied issue 4 of the Stanley Howler Stamp Journal.
Hogswatch 2005.	Lilac and grey on a white background. Showing the Hogfather on his sleigh. These stamps will be on sale from December 2005 until the end of January 2006.	35 * 46	Wincanton perfs (10/2cm).	Unlimited sheet of 30.
Hogswatch 2005 sport.	Lilac and grey on a white background. Showing the Hogfather on his sleigh. The numerical 50p is replaced by the words 'FIFTY PENCE'.	35 * 46	Wincanton perfs (10/2cm).	In LBEs only.
Half Penny Post Office Gold.	Gold on a white face. Central design is of the original Post Office after restoration and bearing the motto "Neither Rain nor Snow Nor Gloom of Night Can Stay These Messengers About Their Duty".	33 * 20	Machine perfs (13.5/2cm).	Unlimited sheet of 20.
Half Penny Post Office Gold sport.	Gold on a white face. Cabbage cartouches are mirror images of their usual self.	33 * 20	Machine perfs (13.5/2cm).	1 per sheet of 20.



Penny Patrician Black.	Mostly black showing the profile of Lord Havelock Vetinari. Has a fine burelage with cartouche in each corner, three-squared divided box at the top and the letters A and M at the bottom.	20 * 25	Machine perfs (13.5/2cm).	Unlimited sheet of 20.
Two Pence Ankh Blue.	Royal blue overall on white background. Central motif of Ankh-Morpork coat of arms with the twin mottos of " <i>Merus In Pectum Et In Aquam</i> " and " <i>Quanti Canicula Ille In Fenestra</i> ".	30 * 35	Machine perfs (13.5/2cm).	Unlimited sheet of 20.
Two Pence Ankh Blue.	Royal blue overall on white background. There are extra berries by the leaves in the bottom left corner of the stamp.	30 * 35	Machine perfs (13.5/2cm).	1 per sheet of 20.
Five Pence Morporkia Orange.	Orange tints over a white background. Morporkia girdled, fork in ascent and the Ankh-Morpork coat of arms on a shield.	35 * 40	Machine perfs (13.5/2cm).	Unlimited sheet of 20.
Ten Pence Morporkia Purple.	Purple hues over a white background. Morporkia girdled, fork in ascent and the Ankh-Morpork coat of arms on a shield.	35 * 40	Machine perfs (13.5/2cm).	Unlimited sheet of 20.
Fifty Pence Cabbage Field.	Brassica green and light brown on a white background. Showing a view of the cabbage fields of Sto Lat.	35 * 30	Machine perfs (13.5/2cm).	Unlimited sheet of 20.
Fifty Pence Cabbage Field variant.	Brassica green and light brown on a white background. Showing a view of the cabbage fields of Sto Lat. With the addition of a young couple in view. Also known as the "Flagrant Cabbage".	34 * 30	Wincanton perfs (10/2cm).	In LBEs only.
Ankh Morpork Official Post Stamp.	Plum hues over a white background. Central motif of Ankh-Morpork coat of arms with the twin mottos of " <i>Merus In Pectum Et In Aquam</i> " and " <i>Quanti Canicula Ille In Fenestra</i> ". Overprinted with a large grey V in filled with grey wobbly lines. Also known as the "Pain of Pain".	35 * 67	Wincanton perfs (10/2cm).	In LBEs only.
Wincanton Wrinkly.	Blue hues over a white background. Features the frontage of 41 The High Street and an inset picture of Bernard the Stout.	24 * 36	Wrinkly edged, hand cut.	Available as a special gift from Bernard randomly in some of his birthday raffle covers.
Blue Bernard.	Same design as the Wincanton Wrinkly, but slightly larger and perforated. Used on post from Wincanton.	25 * 38	Wincanton perfs (10/2cm).	Used on post from Wincanton.
5p Duty Paid.	Features the coat of arms of Ankh-Morpork. Black printing on a red background, with the text "Duty Paid" and the value of 5p.	35 * 53	Wincanton perfs (10/2cm).	Available with the Perforator's Privilege Porter label only.
Stanley Gibbons Cinderella.	Variant on the Stampex Cinderella printed in grey/green. Features the text "The Cunning Artificers Discworld Cinderellas", along with cartouches of SG and 2005. Comes attached to a small label detailing the stamp and its design and production.	40 * 35	Wincanton perfs (10/2cm).	300 only, for sale with the special editions of the Stanley Gibbons magazine from the shop.





Stamp	Description	Size (mm)	Perfs	Rarity
Widow's Mite Half Farthing	Black on white, praying hands around a written prayer addressed to a city temple	22 * 27	Wincanton perfs (10/2cm)	Issued as a booklet of 8 stamps with Journal 5 (600 booklets)
Sto Lat 1p	The Sto Lat One Penny featuring Her Supreme Majesty Queen Kelirehenna. Brassica tints on a white background	21 * 24	Wincanton perfs (10/2cm)	Unlimited
Sto Lat 10p	A symphony of blue tints over a cream base, showing the delightful hilltop town of Sto Lat and the regal bust of Her Supreme Majesty Queen Kelirehenna	37 * 24	Wincanton perfs (10/2cm)	Available as a A5 perforated proof sheet. Limited to Journal holders only 1000 sheets available
\$1 Tower of Art, Year of the Signifying Frog	Red and Blue tints on a white background	30 * 95	Wincanton perfs (10/2cm)	Unlimited
\$1 Tower of Art, Sport	Red and Blue tints on a white background. The tower picture is inverted.	30 * 95	Wincanton perfs (10/2cm)	Only available in LBEs.
Sto Helit 5p	The Sto Helit Five Penny featuring Susan Sto Helit. Brown and ochre on a light brown background. Boars heads at top with price in figures and the phrase Sto Helit at the bottom.	25 * 35	Wincanton perfs (10/2cm)	Unlimited
Sto Helit 5p Sport	The Sto Helit Five Penny featuring Susan Sto Helit. Brown and ochre on a light brown background. Boars heads at top with price in figures and the phrase Sto Helit at the bottom. Omega symbol on necklace is inverted.	25 * 35	Wincanton perfs (10/2cm)	1 per sheet of 42
	12 (3 high by 4 wide) Vetinari "Pain of Pain" Stamps of various hues featuring "Pain of Pain" 'phosphor' stamps			
Vetinari "Rainbow Sheet"	<p><b>Top Row</b></p> <ul style="list-style-type: none"> <li>Blue with shiny V over the V on the stamp</li> <li>Red with shiny V over the V on the stamp</li> <li>Purple with misaligned V - the bottom half of the V on at the top of the stamp and the top of the V is at the bottom.</li> <li>Purple upside down stamp, shiny V over the V on the stamp</li> </ul> <p><b>Middle Row</b></p> <ul style="list-style-type: none"> <li>Grey/Black with no shine</li> <li>Red - appears to be the same as the red stamp on the top line.</li> <li>Purple with two shiny V's meeting at the bottom of the V.</li> <li>Purple - appears to be the standard pain of Pain stamp.</li> </ul> <p><b>Bottom Row</b></p> <ul style="list-style-type: none"> <li>Blue with upside down shiny V</li> <li>Red with upside down shiny V</li> <li>Purple with two shiny V's meeting at the top of the V</li> <li>Purple with upside down shiny V</li> </ul>	35 * 67	Wincanton perfs (10/2cm)	Only 500 sheets will be available as part of the Green Cabbage Trading Scheme.
Forum 1 <sup>st</sup> Birthday Stamp	Blue/grey on white, features the Stanley Howler wings at the top above the wording 'COMMEMORATING The LOYAL AND FRATERNAL MEMBERSHIP of the DISCWORLD STAMP FORUM' The words :STANLEY' and 'HOWLER' at its sides, all above 'Year One 30 Jan 2005 30 Jan 2006'	31 * 38	Wincanton perfs (10/2cm)	Limited to forum members registered on 30 <sup>th</sup> Jan 2006.





Stamp	Description	Size (mm)	Perfs	Rarity
1p Lancre Stamp	Features King Verence II and the wording "The Royal Kingdom of Lancre Public Postal Service".	28 x 32	Wincanton	Only available in LBEs ordered on 1 <sup>st</sup> April 2006.
Lancre Stamp Artifact	"Lancre Post for 1 dollar \$1. Sined for his Mageste S.Ogg Postmaster in Charge." and a Red Duck design. Design layout varies among the 100 produced.	Non Uniform Size	None	100 only produced.
Bad Blintz 1 Bizot	Features a smiling rat in shades of brown on a white background.	21 x 26	Wincanton	Unlimited.
Bad Blintz 1 Bizot Sport	The Rat Widdle sport. A yellow stain to the bottom right corner of the stamp.	21 x 26	Wincanton	1 per sheet of 25 stamps.
Bad Blintz 2 Bizot	Shows a view of the Rathaus in reddy-brown on a white background.	26 x 21	Wincanton	Unlimited.
Bad Blintz 2 Bizot Sport	The lower half of the "Z" of Blintz is missing.	26 x 21	Wincanton	1 per sheet of 25 stamps.
Bad Blintz 5 Bizot	Features the Rat Piper in shades of blue on a white background.	21 x 26	Wincanton	Unlimited.
Bad Blintz 5 Bizot Sport	The rows of dots along the edges of the stamps are double-spaced compared to those of the common version.	21 x 26	Wincanton	1 per sheet of 25 stamps.
Bad Blintz 10 Bizot	Features the Rat Catcher Museum in shades of grey and black on a white background.	35 x 40	Wincanton	Unlimited.
Bad Blintz 10 Bizot Sport	The lamps are missing from the ends of the balcony.	35 x 40	Wincanton	1 per sheet of 25 stamps.
Bad Blintz 20 Bizot	Features the Rat Clock in shades of grey-green on a white background.	35 x 40	Wincanton	Unlimited.
Bad Blintz 20 Bizot Sport	The clanger from the bell is missing.	35 x 40	Wincanton	1 per sheet of 25 stamps.
Bad Blintz 50 Bizot	Featuring the Dancing Rat in shades of yellow, brown and black on a white background.	35 x 40	Wincanton	Unlimited.
Bad Blintz 50 Bizot Sport	The end of the "L" in Blintz is square-cut rather than angled as on the common version.	35 x 40	Wincanton	1 per sheet of 25 stamps.
Bad Blintz 100 Bizot	A representation of Wotua Gram's famous painting <i>The Signing of the Pact</i> in full colour on a white background.	62 x 31	Wincanton	Unlimited.
Bad Blintz 100 Bizot Sport	The rat at the left-hand end of the table is missing.	62 x 31	Wincanton	1 per sheet of 25 stamps.
Rat Stamp – Candle	Red background with figures of a rat and man, a candle and 20 diamonds.	12 x 12	Special RAT perfs	80 only produced available in Spring Fate LBEs.
Rat Stamp – Potato	Red background with figures of a rat and man, a potato and 5 diamonds.	12 x 12	Special RAT perfs	80 only produced available in Spring Fate LBEs.
Rat Stamp – Raisin	Red background with figures of a rat and man, a raisin and 1 diamond.	12 x 12	Special RAT perfs	80 only produced available in Spring Fate LBEs.
Wahooni	The stamp features the Big Wahooni with its discoverer, General Sir Roderick Purdeigh, smoking his pipe.	40 x 28	Wincanton	Released with Journal 6.
Smokeless Wahooni	Same as the Wahooni stamp, but Sir Roderick's pipe is unlit, and the puff of smoke is missing.	40 x 28	Wincanton	6 "escaped" with J6 issue. Released with Journal 7.
Da Vinci's Cod Stamp	Yellow, green and purple design featuring a 2 fish and a challis. The wording is "Da Vinci's Cod dna eht heraes rof eht yloH gnilyerg."	29 x 38	Wincanton	Used on envelopes from Wincanton.



The Shades Surchage	1/2p Post Office Red Overprinted with 'One Farthing 1/4p Shades Surchage'	33 x 20	Wincanton	Released with Journal 7
\$5 Purple Triangle	Shades of purple on white with a picture of the Ankh Bridge. Successor to the \$5 Blue triangle.	65 x 33	Wincanton	500 only to be produced
Convention 1/4d stamp	Shades of green and red on white. A picture of Hinckley Isle and the words 'Discworld Convention, Hinckley 2006'	45 x 36	Wincanton	In Convention welcome pack.
Unseen University Farthing	The stamp depicts the Unseen University book bearing the UU motto " <i>Nunc id Vides, Nunc ne Vides</i> " and below a wizard's hat in Gold, Burgundy and Yellow.	21 x 26	Wincanton	Unlimited
Unseen University Farthing Sport	Id and ne swapped over in the motto	21 x 26	Wincanton	1 per sheet of 25
Unseen University Penny	The stamp depicts the Unseen University library enclosed in a circle with the wording " <i>Unseen Univ</i> " in Gold and Ochre.	35 x 40	Wincanton	Unlimited
Unseen University Penny Sport	The picture of the Unseen University library is a mirror image of the common stamp.	35 x 40	Wincanton	1 per sheet of 25
Unseen University Penny Farthing	The stamp depicts the main door to the Unseen University in Gold, Green and Burnt Umber.	31 x 62	Wincanton	Unlimited
Unseen University Penny Farthing Sport	The door to the Unseen University is open.	31 x 62	Wincanton	1 per sheet of 25
Wadfest Stamp V1	The stamp features the portrait of Sir Waddington-Crust, Scholar, Philanthropist and night soil collector, Founder of the Back to Nature Movement President of the WADFEST 'Joy through Strength' Jamboree, Retford 2006	35 x 53	Wincanton	Available on Wadfest Ticket envelope.
Wadfest Stamp V2	The stamp features the portrait of Sir Waddington-Crust, Scholar, Philanthropist and night soil collector, Founder of the Back to Nature Movement President of the WADFEST 'Joy through Strength' Jamboree, Retford 2006. This is lighter in colour than Version 1.	35 x 53	Wincanton	Only available in the 800 Wadfest LBEs.
Wadfest Stamp Sport Type 1	Stamp as above but the portrait is a mirror image of the common stamp (Sir Waddington-Crust is looking in the opposite direction). The type 1 sport is the top left corner stamp from the sheet.	35 x 53	Wincanton	1 per sheet of 25 stamps
Wadfest Stamp Sport Type 2	Stamp as above but the portrait is a mirror image of the common stamp. The type 2 sport is the top row stamp in the second column of the sheet (directly to the right beside the type 1 sport above).	35 x 53	Wincanton	1 per sheet of 25 stamps
Penny Patrician Green	Black tinged green showing the profile of Lord Havelock Vetinari. Cartouche in each corner, three-squared divided box at the top and the letters E and K at the bottom.	20 x 25	Wincanton	Available on covers commemorating opening of East Knoyle Post Office
Wren Stamp	Shades of brown on white, a picture of Christopher Wren in front of St. Paul's Cathedral and the words 'East Knoyle Community Shop, 5th August 2006, Wren's Shop.	29 x 34	Wincanton	Unlimited
Customs Clearance Duty Paid	Green on white. Central motif of Ankh- Morpork coat of arms. With the words 'ANKH-MORPORK Consulate Wincanton, This item has been passed DUTY PAID at source and IMPORTED UNDER LICENCE number: WIN/1003-5b-2006 held at the Commercial Dept WIN/COM, CUSTOMS CLEARANCE'	33 x 50	Wincanton	Available on the back of Cabbage seed packets.



Bonk Stamp 1 Bizlot	In shades of blue, featuring a werewolf standing by a steaming geyser lit by a full moon, framed by the phases of the moon and with a double-headed vampyr bat in a cartouche above.	66 x 30	Wincanton Perfs	Unlimited
Bonk Stamp 100 Bizlot	On a decorated background, a central cartouche features the double-headed vampyr bat, all in shades of fresh blood red on a parchment colour background.	36 x 34	Wincanton Perfs	Unlimited
Bonk Stamp 100 Bizlot Sport	As above but has extra patterns beneath the o and n of the word Bonk.	36 x 34	Wincanton Perfs	1 per sheet of 40
Bonk Stamp 120 Bizlot	On a decorated background, a central cartouche features the double-headed vampyr bat, all in shades of black grape purple on a parchment colour background.	36 x 34	Wincanton Perfs	Unlimited
Bonk Stamp 120 Bizlot Sport	As above but part of the pattern just above the each figure 120 is inverted.	36 x 34	Wincanton Perfs	1 per sheet of 40
Tower of Art Fountain Colours	The much heralded 'fountain' print Tower of Art stamp for the year of the Reversed Ptarmigan. Shades of brown, green and ochre.	20 x 95	Wincanton Perfs	Unlimited
Tower of Art Fountain Sport V1	"The Darren" The left hand side selvedge features the words "Ankh~Morpork – The year of the reversed ptarmigan" The top selvedge has the BP, CE and AB initials.	20 x 95	Wincanton Perfs	Only available in LBEs
Tower of Art Fountain Sport V2	"The Jonty" The patricians head is a cyan colour as opposed to a green on the common.	20 x 95	Wincanton Perfs	Only available in LBEs
Tower of Art Fountain Sport V3	"The Noggin" Has the same colour top and bottom as the common stamp has at the top. The right hand side selvedge features the words "Ankh~Morpork – The year of the reversed ptarmigan".	20 x 95	Wincanton Perfs	Only available in LBEs
Assassin 3p Contract Renewal	Also known as the Thrupn'y Resurrection. A rich blue and purple, on white body paper. Overprinted with the words "Subject to Contract Renewal".	37 x 42	Wincanton Perfs	Free with Journal 9
Assassin 3p New Contract Stamp	The suitably sinister diamond design 3p stamp, sponsored by the Guild of Assassins under a new contract for the Year of the Reversed Ptarmigan. Featuring the Guild coat of arms in white, on a checkerboard background in shades of Black Grape purple and black.	35 x 35	Wincanton Perfs	Unlimited
Forum Birthday Stamp	Brown on white, features the Stanley Howler wings at the top above the wording 'COMMEMORATING The LOYAL AND FRATERNAL MEMBERSHIP of the DISCOWORLD STAMP FORUM' The words 'STANLEY' and 'HOWLER' at its sides, all above 'Year Two 30 Jan 2006 30 Jan 2007'.	31 x 38	Wincanton Perfs	Limited to forum members registered on 30 <sup>th</sup> Jan 2007.
Nullus Anxietas	Released for the Australian DW Con 2007 features a silhouette of Rincewind and a back drop of an Australian sunset.	24 x 45	Wincanton Perfs	Unlimited
Nullus Anxietas Sport	As above but small kangaroo on the horizon and a cork missing from the hat.	24 x 45	Wincanton Perfs	1 per sheet of 30
Patrician 'Clean' Ear	A subtle change to the Patrician's ear, brought about by Messrs Teemer and Spools cleaning the printing plate.	20 x 25	Wincanton Perfs	Only available in LBEs
Merchant Greengrocers Stamp	Celebrates the Greengrocers of Ankh-Morpork. In shades of decaying cabbage green and cream on a white ground, with a central illustration and a tiled surround.	45 x 32		Unlimited
<b>Addendum</b>	<b>With Thanks to Andrew for pointing out this omission</b>			
Penny Patrician 2p Red	Printed in red. Cartouches (corner plates) bear the letters A – M above being cabbages.	20 x 25	Wincanton Perfs	Used on Ride to Sto-Lat cover but mint ones found in Dragon Sanctuary Envelopes.



Stamp	Description	Size (mm)	Perfs	Rarity
Bernard's Birthday C.O.A. stamp	A special Stamp to celebrate Bernard's 60th Birthday, Gold on white, showing the Artificers crest, including rampant mallet and shag pipes above the UU, an open book with the words 'In Principio Erat Verbum', and his motto 'Donate Mini Malletvim Mairoem'.	39 x 30	Wincanton Perfs	Given to attendees of his birthday bash in the Un-Birthday LBE Present and via the Journal 9.
Koom Valley Penny Patrician	Black and white printing showing the profile of Lord Havelock Vetinari. Cartouche in each corner, the letters A and M at the top and the letters K and V at the bottom.	20 x 25	Wincanton Perfs	Free with Journal 8
Brown Tower Of Art	Depicting the Unseen University Tower of Art amid its scholastic environment. This printing is Brown tints over a white background.	20 x 100	Wincanton Perfs	Limited to 200 available with the Unseen University Cut Out Book.
Anoia Stamp	Black on white statue of the Goddess Anoia and the words 'In Honour of the Goddess Anoia, Ankh Morpork Post Office One Penny' with a fishslice on her necklace.	45 x 38	Wincanton Perfs	Available singly or by the sheet. 500 sheets available.
Anoia Sport Stamp	Black on white statue of the Goddess Anoia and the words 'In Honour of the Goddess Anoia, Ankh Morpork Post Office One Penny' but the fishslice is missing.	45 x 38	Wincanton Perfs	Only available when a sheet was purchased.
Fools Guild Stamp	Purple background, surrounding the three hanging motley bells coat of arms of the Guild. The Guild name is above, and the motto of "Dico Dico Dico" is beneath.	46 x 30	Wincanton Perfs	Part of the Jolly Japes pack for DW Con 2006
Fools Guild Sticky bits	Depiction of clown faces and theatre curtains above the guild motto "Dico Dico Dico".	50 x 30	Wincanton Perfs	Released at the DW Convention 2006
Hogswatch 2 ½ p Stamp	This stamp features an indigo and cream design, the ice rose made by the Wintersmith for Tiffany and the border features snowflakes.	42 x 35	Wincanton Perfs	Unlimited
Hogswatch 2 ½ p Sport	As above but the snowflakes in the border are those that feature on the Hogswatch 5p Snowman Stamp.	42 x 35	Wincanton Perfs	1 per sheet of 30
Hogswatch 5p Stamp	This stamp features a sepia and cream design of the Snowman from Wintersmith, with a rat for a nose, the border incorporates snowflakes.	42 x 35	Wincanton Perfs	Unlimited
Hogswatch 5p Sport	As above but the snowflakes in the border are those that feature on the Hogswatch 2½p Ice Rose Stamp.	42 x 35	Wincanton Perfs	1 per sheet of 30
GCTS Cabbage Seed Substitute stamp	The text "Cabbage Composting Essence" surrounds a picture of a green cabbage and the wording "Do Not Slick". Additional text reads "The 'valiant' auto-compost & slug repelling stamp. Moisten and place under the soil but over the seeds this stamp will release a torrent of natural goodness into the surrounding area".	28 x 41	Wincanton Perfs	Available to those overseas in place of the cabbage seeds packets.
Green Susan	The Sto Helit Five Penny featuring Susan Sto Helit printed in shades of green. Boars heads at top with price in figures and the phrase Sto Helit at the bottom.	25 x 35	Wincanton Perfs	Only available in random Winter Warmer LBEs
Green Susan Sport	As above but the Omega sign on her broach is inverted.	25 x 35	Wincanton Perfs	As above.
Plum Seamstress	The Seamstress' Guild Two Pence now a voluptuous shade of plum. Features the guild shield and motto Nil Volupti, Sine Lucre, and is still known as the Tuppn'y Upright.	30 x 39	Wincanton Perfs	Unlimited
Plum Seamstress Sport	As above but the eye of the dove is winking.	30 x 39	Wincanton Perfs	1 per sheet of 42
Plum Seamstress misperfs	As above but featured a deliberate extra line of perforations either horizontally or vertically.	30 x 39	Wincanton Perfs	Only available in Valentines LBEs
Plum Seamstress corner	As above, but due to a printing error the top-right hand corner of the stamp near the heart has some missing print.	30 x 39	Wincanton Perfs	Only available in Valentines LBEs



Bonk Stamp 1 Bizlot	In shades of blue, featuring a werewolf standing by a steaming geyser lit by a full moon, framed by the phases of the moon and with a double-headed vampyr bat in a cartouche above.	66 x 30	Wincanton Perfs	Unlimited
Bonk Stamp 100 Bizlot	On a decorated background, a central cartouche features the double-headed vampyr bat, all in shades of fresh blood red on a parchment colour background.	36 x 34	Wincanton Perfs	Unlimited
Bonk Stamp 100 Bizlot Sport	As above but has extra patterns beneath the o and n of the word Bonk.	36 x 34	Wincanton Perfs	1 per sheet of 40
Bonk Stamp 120 Bizlot	On a decorated background, a central cartouche features the double-headed vampyr bat, all in shades of black grape purple on a parchment colour background.	36 x 34	Wincanton Perfs	Unlimited
Bonk Stamp 120 Bizlot Sport	As above but part of the pattern just above the each figure 120 is inverted.	36 x 34	Wincanton Perfs	1 per sheet of 40
Tower of Art Fountain Colours	The much heralded 'fountain' print Tower of Art stamp for the year of the Reversed Ptarmigan. Shades of brown, green and ochre.	20 x 95	Wincanton Perfs	Unlimited
Tower of Art Fountain Sport V1	"The Darren" The left hand side selvedge features the words "Ankh~Morpork – The year of the reversed ptarmigan" The top selvedge has the BP, CE and AB initials.	20 x 95	Wincanton Perfs	Only available in LBEs
Tower of Art Fountain Sport V2	"The Jonty" The patricians head is a cyan colour as opposed to a green on the common.	20 x 95	Wincanton Perfs	Only available in LBEs
Tower of Art Fountain Sport V3	"The Noggin" Has the same colour top and bottom as the common stamp has at the top. The right hand side selvedge features the words "Ankh~Morpork – The year of the reversed ptarmigan".	20 x 95	Wincanton Perfs	Only available in LBEs
Assassin 3p Contract Renewal	Also known as the Thrupn'y Resurrection. A rich blue and purple, on white body paper. Overprinted with the words "Subject to Contract Renewal".	37 x 42	Wincanton Perfs	Free with Journal 9
Assassin 3p New Contract Stamp	The suitably sinister diamond design 3p stamp, sponsored by the Guild of Assassins under a new contract for the Year of the Reversed Ptarmigan. Featuring the Guild coat of arms in white, on a checkerboard background in shades of Black Grape purple and black.	35 x 35	Wincanton Perfs	Unlimited
Forum Birthday Stamp	Brown on white, features the Stanley Howler wings at the top above the wording 'COMMEMORATING The LOYAL AND FRATERNAL MEMBERSHIP of the DISCOWORLD STAMP FORUM' The words 'STANLEY' and 'HOWLER' at its sides, all above 'Year Two 30 Jan 2006 30 Jan 2007'.	31 x 38	Wincanton Perfs	Limited to forum members registered on 30 <sup>th</sup> Jan 2007.
Nullus Anxietas	Released for the Australian DW Con 2007 features a silhouette of Rincewind and a back drop of an Australian sunset.	24 x 45	Wincanton Perfs	Unlimited
Nullus Anxietas Sport	As above but small kangaroo on the horizon and a cork missing from the hat.	24 x 45	Wincanton Perfs	1 per sheet of 30
Patrician 'Clean' Ear	A subtle change to the Patrician's ear, brought about by Messrs Teemer and Spools cleaning the printing plate.	20 x 25	Wincanton Perfs	Only available In LBEs
Merchant Greengrocers Stamp	Celebrates the Greengrocers of Ankh-Morpork. In shades of decaying cabbage green and cream on a white ground, with a central illustration and a tiled surround.	45 x 32		Unlimited
<b>Addendum</b>	<b>With Thanks to Andrew for pointing out this omission</b>			
Penny Patrician 2p Red	Printed in red. Cartouches (corner plates) bear the letters A – M above being cabbages.	20 x 25	Wincanton Perfs	Used on Ride to Sto-Lat cover but mint ones found in Dragon Sanctuary Envelopes.



Stamp	Description	Size (mm)	Perfs	Rarity
Ten Pence Koom Valley Dwarf	Shades of green on a white background. Scene showing Koom Valley with Dwarfs chasing trolls. This stamp has no border or white edge to the stamp, and shows extra figures and additional background.	33 41	Wincanton Perfs	600 Special Offer Miniature Sheet with Journal 7a
Ten Pence Koom Valley Troll	Shades of green on a white background. Scene showing Koom Valley with Trolls chasing dwarfs. This stamp has no border or white edge to the stamp, and shows extra figures and additional background.	33 41	Wincanton Perfs	600 Special Offer Miniature Sheet with Journal 7a
Bonk Stamp 1 Bizlot Sport phase1	In shades of blue, featuring a werewolf standing by a steaming geyser lit by a full moon. Werewolf in process of transforming. Phase 1	66 x 30	Wincanton Perfs	Only available in LBEs
Bonk Stamp 1 Bizlot Sport phase2	In shades of blue, featuring a werewolf standing by a steaming geyser lit by a full moon. Werewolf in process of transforming. Phase 2	66 x 30	Wincanton Perfs	Only available in LBEs
Bonk Stamp 1 Bizlot Sport phase3	In shades of blue, featuring a werewolf standing by a steaming geyser lit by a full moon. Werewolf in process of transforming. Phase 3	66 x 30	Wincanton Perfs	Only available in LBEs
Bonk Stamp 1 Bizlot Sport phase4	In shades of blue, featuring a werewolf standing by a steaming geyser lit by a full moon. Werewolf in process of transforming. Phase 4	66 x 30	Wincanton Perfs	Only available in LBEs
Bonk Stamp 1 Bizlot Sport phase5	In shades of blue, featuring a werewolf standing by a steaming geyser lit by a full moon. Werewolf in process of transforming. Phase 5	66 x 30	Wincanton Perfs	Only available in LBEs
Bonk Stamp 1 Bizlot Sport phase6	In shades of blue, featuring a werewolf standing by a steaming geyser lit by a full moon. Werewolf in process of transforming. Phase 6	66 x 30	Wincanton Perfs	Only available in LBEs
Bonk Stamp 1 Bizlot Sport phase7	In shades of blue, featuring a werewolf standing by a steaming geyser lit by a full moon. Werewolf in process of transforming. Phase 7	66 x 30	Wincanton Perfs	Only available in LBEs
Half Penny Post Office Ochre	Ochre on a white face. Central design is of the original Post Office after restoration and bearing the motto Neither Rain Nor Snow Nor Gloom of Night Can Stay These Messengers About Their Duty. The cabbages in the top corner cartouches are "mirror images" of their usual selves.	33 x 20	Wincanton Perfs	Unlimited
Penny Patrician Year 3	Mostly black showing the profile of Lord Havelock Vetinari. Has a fine burelage with cartouche in each corner, with an ankh at top left, a Morpork owl at top right, and the letters A and M at the bottom.	20 x 25	Wincanton Perfs	Unlimited
Penny Patrician Year 3 Sport	As above but the letter 'A' in Postage has been reversed.	20 x 25	Wincanton Perfs	Only available in LBEs
Two Pence Ankh Green	In shades of Cabbage Green. Central motif of Ankh-Morpork coat of arms with the twin mottos of <i>Merus In Pectum Et In Aquam</i> and <i>Quanti Canicula Ille In Fenestra</i> .	30 x 35	Wincanton Perfs	Unlimited
Five Pence Morporkia Plum	Plum over a white background. Morporkia girdled, fork in ascent, and the Ankh Morpork coat of arms on a shield.	35 x 40	Wincanton Perfs	Unlimited
Five Pence Morporkia Plum Sport	As above but missing the dots on the oval banner that says Post Office.	35 x 40	Wincanton Perfs	1 per sheet of 25
Ten Pence Morporkia Brown	Cocoa hues over a white background. Morporkia girdled, fork in ascent, with the Ankh Morpork coat of arms on a shield.	35 x 40	Wincanton Perfs	Unlimited
Ten Pence Morporkia Brown Sport	As above but the 'p' of 10p is lower in the design than the common stamp.	35 x 40	Wincanton Perfs	1 per sheet of 25
One Penny Winged God Commemorative	Features a picture of the winged god statue above the Ankh-Morpork Post Office.	66 x 30	Wincanton Perfs	Free with Journal 10
Three Pence Commemorative Post Box	Features a picture of an Ankh-Morpork postal collection box with the words "Commemorating the 500 <sup>th</sup> Post Office Collection Box in Ankh-Morpork".	21 x 44	Wincanton Perfs	500 only available with the build your own post box.
Genua 1 Cent	In black on a white background, the proud cockerel so	18 x 23	Wincanton	Unlimited



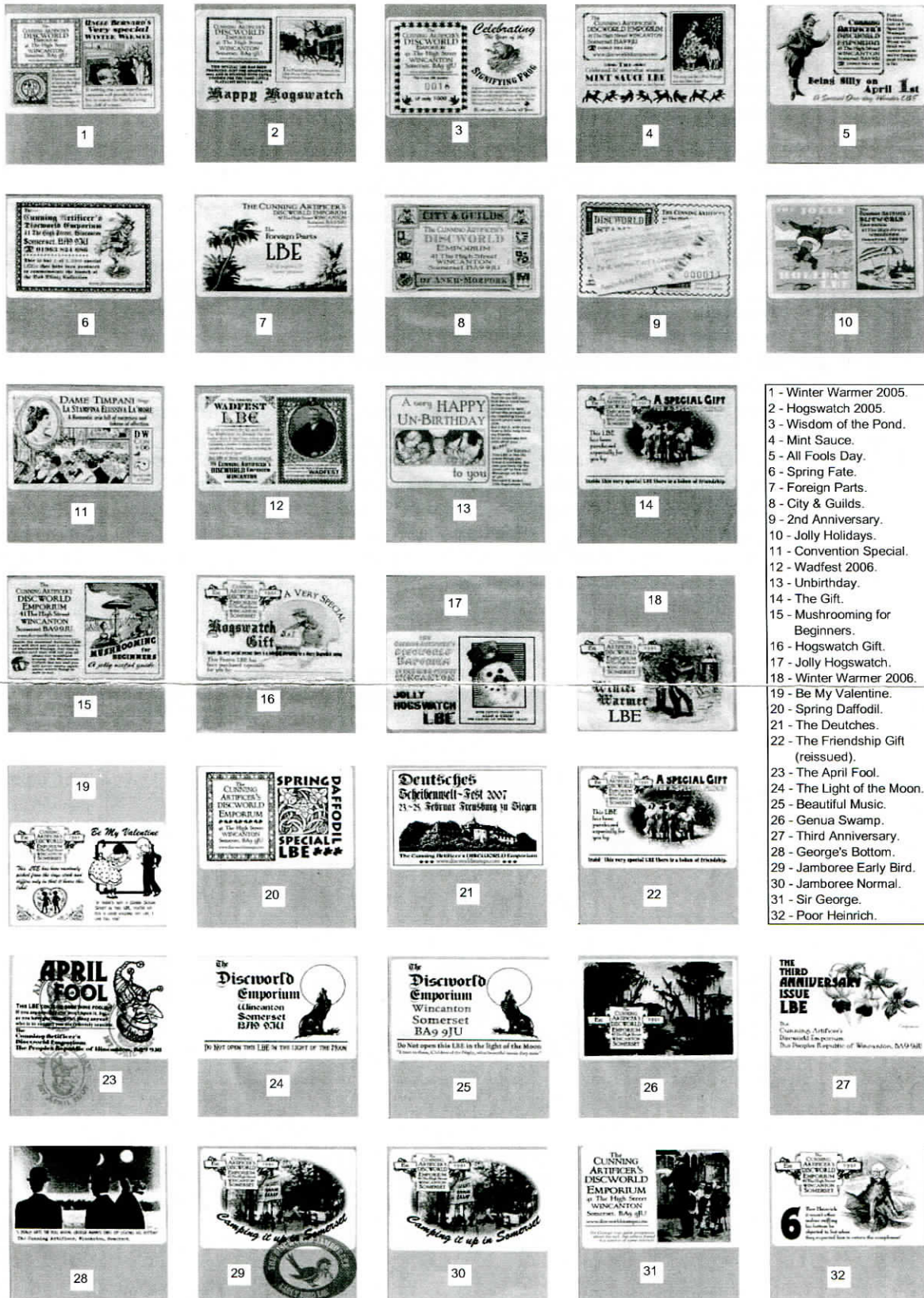
	symbolic of the Genua love of cookery and other magical practices.		Perfs	
Genua 1 Cent Sport	As above but the cockerel is headless	18 x 23	Wincanton Perfs	3 per sheet of 90
Genua 1 Dollar	In memory of the past ruler of Genua and featuring the famous swamps.	40 x 26	Wincanton Perfs	Unlimited
Genua 1 Dollar Sport	As above but the colour of the background inside the letter of Genua is the same as the background.	40 x 26	Wincanton Perfs	1 per sheet 32
Genua 5 Dollar	Featuring Genua's famous castle, and the appropriate denomination for sending messages by Clacks or mail by coach to Ankh-Morpork. In shades of plum on an ivory background.	83 x 30	Wincanton Perfs	Unlimited
Genua 5 Dollar Sport	As above but has a number of the windows missing	83 x 30	Wincanton Perfs	1 per sheet of 18
Sir Rolande de Colline \$2	In shades of blue to mark the third anniversary of Discworld stamps, this stamp commemorates Sir Rolande de Colline, Ankh-Morpork's first Master of the Post.	32 x 40	Wincanton Perfs	Unlimited
Sir Rolande de Colline \$2 Sport	As above but the patch is over his left eye.	32 x 40	Wincanton Perfs	1 per sheet of 30
Sir Rolande de Colline \$2 red and plum	As above but this stamp in red and plum shades.	32 x 40	Wincanton Perfs	Only available with Journal 11
Discworld Jamboree 6d	In shades of leaf green on cream, the 'flur de knees' symbol of the Ankh-Morpork and District Scout Association (Unaffiliated), together with a knot and the Discworld Scout Motto, In Omnia Paratus (ready for anything).	44 x 26	Wincanton Perfs	Unlimited (also available as a miniature sheet of 6 from the Jamboree bag)
Discworld Jamboree 6d sport	As above but the 6d value is a dark green.	44 x 26	Wincanton Perfs	1 per sheet of 42
Jamboree 1 shilling V1	In shades of khaki, peach, green and black on a pale khaki background, illustrating the many unusual ways that Discworld Scouts amuse themselves, and give a whole new meaning to Bob-a Job. The two scouts appear to be playing 'slaps'.	43 x 27	Wincanton Perfs	6 per sheet of 42
Jamboree 1 shilling V2	As above except the two scouts appear to be playing 'horsey'.	43 x 27	Wincanton Perfs	6 per sheet of 42
Jamboree 1 shilling V3	As above except the two scouts appear to be imitating an insect.	43 x 27	Wincanton Perfs	6 per sheet of 42
Jamboree 1 shilling V4	As above except the two scouts appear to have knotted their legs together	43 x 27	Wincanton Perfs	6 per sheet of 42
Jamboree 1 shilling V5	As above except the two scouts appear to be taking part in a wheelbarrow race.	43 x 27	Wincanton Perfs	6 per sheet of 42
Jamboree 1 shilling V6	As above except the two scouts appear to be diving back first down the other scout.	43 x 27	Wincanton Perfs	6 per sheet of 42
Jamboree 1 shilling V7	As above except a third scout appears to have joined in.	43 x 27	Wincanton Perfs	5 per sheet of 42
Jamboree 1 shilling Sport	As above V6 except the colours of the wording 'Discworld Jamboree' and 'In Omnia Paratus' have been swapped over.	43 x 27	Wincanton Perfs	1 per sheet of 42
Jamboree 1 shilling Floorboard Sport	As above except the two scouts appear to have changed position and some floorboards have become visible.	43 x 27	Wincanton Perfs	Only available in LBEs
\$5 tent triangle	Shades of green on white, showing three scouts (human, troll, and dwarf) looking out of a tent.	65 x 46	Wincanton Perfs	500 Only available in LBEs
Thieves Guild 5p	Shades of violet on an ivory background showing the Guild building. At top a cut purse with coins falling out. Available as gutter pairs.	34 x 46	Wincanton Perfs	Unlimited
Thieves Guild 5p Sport v1	As above but one coin is missing	34 x 46	Wincanton Perfs	1 per sheet of 20
Thieves Guild 5p Sport v2	As above but two coins are missing	34 x 46	Wincanton Perfs	1 per sheet of 20
Thieves Guild	Shades of plum on an ivory background showing the Guild	34 x 46	Wincanton	Unlimited



7p	building. At top a cut purse with coins falling out. Available as gutter pairs.		Perfs	
Thieves Guild 7p Sport v1	As above but one coin is missing	34 x 46	Wincanton Perfs	1 per sheet of 20
Thieves Guild 7p Sport v2	As above but two coins are missing	34 x 46	Wincanton Perfs	1 per sheet of 20
Jamboree Early Bird Stamp	Shades of green on white, with the picture of a bird on a twig in an oval frame with a worm in its beak. The words Ankh Morpork Consulate, top and bottom, plus postage paid either side.	38 x 40	Wincanton Perfs	Only available in Early Bird LBEs
Lawyers Guild 1p	Featuring the Scales of Justice, but justice, it seems, depends on equally matched money bags, and of course there is always the small print. Printed in shades of dark blue, dark green and charcoal grey on ivory.	24 x 29	Wincanton Perfs	Unlimited
Lawyers Guild 1p sport	As above but the top line of small print behind the shield is offset.	24 x 29	Wincanton Perfs	1 per sheet of 66
Lawyers Guild \$5	A richly embellished new five dollar stamp sponsored by the Lawyers Guild and featuring the guild headquarters, together with the Scales of Justice (with finely balanced money bags) and the guild motto: Lvcre Sermat.	36 x 50	Wincanton Perfs	Unlimited
Lawyers Guild \$5 sport	As above but there is a man climbing the clock tower	36 x 50	Wincanton Perfs	1 per sheet of 20
Discworld Jamboree balloon release stamp	Shades of green and red on white, with the picture of a balloon with the name Wincanton across its centre plus a label that says I ♥ Isobel. The words Discworld Jamboree 2007, top and bottom, plus Great Balloon race either side.	39 x 34	Wincanton Perfs	Only available to those whose balloon was found and returned
Duty Paid 6p	Black on shades of beige brown features the wording Duty Paid 6 Pence, Ankh-Morpork Consulate Excise.		Wincanton Perfs	On the gift with purchase for "Making Money" from the Discworld Emporium.
Vetinari Certificate Stamp	Black on black featuring Vetinari coat of arms and the letter V.	33 x 45	Wincanton Perfs	Only available on the certificate issued to those who donated pain of pain stamps for a charity fundraiser



# Little Brown Envelope Update



- 1 - Winter Warmer 2005.
- 2 - Hogswatch 2005.
- 3 - Wisdom of the Pond.
- 4 - Mint Sauce.
- 5 - All Fools Day.
- 6 - Spring Fate.
- 7 - Foreign Parts.
- 8 - City & Guilds.
- 9 - 2nd Anniversary.
- 10 - Jolly Holidays.
- 11 - Convention Special.
- 12 - Wadfest 2006.
- 13 - Unbirthday.
- 14 - The Gift.
- 15 - Mushrooming for Beginners.
- 16 - Hogswatch Gift.
- 17 - Jolly Hogswatch.
- 18 - Winter Warmer 2006.
- 19 - Be My Valentine.
- 20 - Spring Daffodil.
- 21 - The Deutches.
- 22 - The Friendship Gift (reissued).
- 23 - The April Fool.
- 24 - The Light of the Moon.
- 25 - Beautiful Music.
- 26 - Genua Swamp.
- 27 - Third Anniversary.
- 28 - George's Bottom.
- 29 - Jamboree Early Bird.
- 30 - Jamboree Normal.
- 31 - Sir George.
- 32 - Poor Heinrich.



Stamp	Description	Size (mm)	Perfs	Rarity
The Two Shirts 2p (Cabbage)	The Two Shirts Postal Service has re-emerged with a new brassica green 2p stamp.	38 x 32	Wincanton Perfs	Unlimited
The Two Shirts 2p (Cabbage) sport	As above but with an extra fold in the border design	38 x 32	Wincanton Perfs	1 per sheet of 12
The Sto Lat 2p	The Sto Lat 2p features the portrait of Queen Kelirehenna within a dignified frame in black on a white background.	40 x 35	Wincanton Perfs	Unlimited
The Sto Lat 2p Sport	As above except the queen has raised eyebrows.	40 x 35	Wincanton Perfs	1 per sheet of 15
The Sto Lat 25p	Featuring the mountain city state rising above the cabbage fields of the Sto plains, together with a cartouche of Her Supreme Majesty, Queen Kelirehenna. In damson on a cream background.	50 x 32	Wincanton Perfs	Unlimited
The Sto Lat 25p sport	As above except the top rights coil centre has been coloured in.	50 x 32	Wincanton Perfs	1 per sheet of 12
Lawyers Guild \$5 (Reissued)	A reprinted version of the original Lawyers Guild \$5 stamp with improved print quality and the apostrophes moved to the correct position.	36 x 50	Wincanton Perfs	Unlimited
Lawyers Guild \$5 sport (Reissued)	As above but there is a man climbing the clock tower	36 x 50	Wincanton Perfs	1per sheet of 20
The Cabbage Field 25p	The Cabbage Field stamp has been reincarnated with a new colour - red cabbage red - and a new denomination, 25p.	35 x 30	Wincanton Perfs	Unlimited
The Cabbage Field 25p Sport	As above but the buildings on the horizon have been reversed	35 x 30	Wincanton Perfs	1 per sheet of 15
Hogswatch 2007 3p Stamp	A jolly red post box covered with seasonal snow adorns the Hogswatch 2007 three pence stamp, along with a festive greeting from the staff of the Ankh-Morpork Post Office. Printed in postbox red and black on a snow white background.	45 x 21	Wincanton Perfs	Unlimited
Hogswatch 2007 3p Sport	As above except with bloody marks outside the post box.	45 x 21	Wincanton Perfs	1 per sheet of 54
Hogswatch 2007 50p Stamp	A traditional toymaker's shop in Olde Ankh-Morpork is depicted on the stamp is printed in full colour. The brightly lit window displays a doll's house and a rocking, while outside in the snow a well-dressed father and daughter and a ragged street urchin gaze admiringly at the fine goods within.	45 x 35	Wincanton Perfs	Unlimited
Hogswatch 2007 50p Stamp Sport	As above but the Patrician's head is looking the other way.	45 x 35	Wincanton Perfs	1 per sheet of 54
Hogswatch 2007 50p Stamp Variant 1	As common stamp except the rocking horse has been removed from the window	45 x 35	Wincanton Perfs	250 only
Hogswatch 2007 50p Stamp Variant 2	As common stamp except the shop keeper is coming out of the shop door.	45 x 35	Wincanton Perfs	250 only
Hogswatch 2007 50p Stamp Variant 3	As common stamp except the boy is free from the window.	45 x 35	Wincanton Perfs	250 only
Owlswick red halfpenny stamp forgery A	A pencil sketch of the Post Office halfpenny stamp by Owlswick Jenkins, as seen on the Owlswick Jenkins Proof Sheet.	33 x 20	Wincanton Perfs	Only available in LBEs
Owlswick red halfpenny stamp forgery B	A pencil sketch of the Post Office halfpenny stamp by Owlswick Jenkins with the outer border painted red, as seen on the Owlswick Jenkins Proof Sheet.	33 x 20	Wincanton Perfs	Only available in LBEs
Owlswick red halfpenny stamp forgery C	A pencil sketch of the Post Office halfpenny stamp by Owlswick Jenkins with the outer border and HALFPENNY painted red, as seen on the Owlswick Jenkins Proof Sheet.	33 x 20	Wincanton Perfs	Only available in LBEs
Owlswick red halfpenny stamp forgery D	A pencil sketch of the Post Office halfpenny stamp by Owlswick Jenkins fully painted, as seen on the Owlswick Jenkins Proof Sheet.	33 x 20	Wincanton Perfs	Only available in LBEs



9p Duty Paid Stamp	Black and red on white, with the words 'Ankh-Morpork consulate EXCISE' and found in each new passport.	TBC	Wincanton Perfs	Available with purchase of a passport
Big Cabbage Commemorative	To commemorate the big cabbage, as described in Making Money.	35 x 30	Wincanton Perfs	Issued with Journal 12
Three Roses Journal stamp	Central portrait of three pink roses with arch surrounding and text "The Year of the Three Roses" plus rose and 2008 cartouches.	34x40	Wincanton Perfs	Issued with Journal 13
Penny Patrician Black (Year of the Three Roses)	Mostly black showing the profile of Lord Havelock Vetinari. Has a fine burelage with stylised rose cartouche in each top corner and the letters A and M at the bottom.	20 x 25	Wincanton Perfs	Unlimited
Penny Patrician Black (Year of the Three Roses) sport V1	As above but the roses in the cartouche are in flower.	20 x 25	Wincanton Perfs	1 per sheet of 25
Penny Patrician Black (Year of the Three Roses) sport V2	Mostly black showing the profile of Lord Havelock Vetinari. Has a fine burelage with stylised rose cartouche in each bottom corner and the letters A and M at the top.	20 x 25	Wincanton Perfs	Appeared in the Valentines Day LBEs
Two Pence Ankh Sepia	In shades of cocoa and milk chocolate. Central motif of Ankh-Morpork coat of arms with the twin mottos of <i>Merus In Pectum Et In Aquam</i> and <i>Quanti Canicula Ille In Fenestra</i> .	30 x 35	Wincanton Perfs	Unlimited
Two Pence Ankh Sepia Sport	As above but the "comma" curls just to either side of the hippos are inverted.	30 x 35	Wincanton Perfs	1 per sheet of 25
Five Pence Morporkia Maroon	In shades of port on a white and beige background. Morporkia girdled, fork in ascent, and the Ankh Morpork coat of arms on a shield.	35 x 40	Wincanton Perfs	Unlimited
Ten Pence Morporkia Grey	Charcoal hues over a steel grey background. Morporkia girdled, fork in ascent, with the Ankh Morpork coat of arms on a shield.	35 x 40	Wincanton Perfs	Unlimited
Tower of Art \$1 (Year of the Three Roses)	The new Tower of Art one dollar stamp for the Year of the Three Roses, in shades of chocolate and violet.	100 x 21	Wincanton Perfs	Unlimited
Tower of Art \$1 (Year of the Three Roses) Sport V1	Mirrored water sport – Only the reflection is shown in reversed in the water.	100 x 21	Wincanton Perfs	Only available in LBEs
Tower of Art \$1 (Year of the Three Roses) Sport V2	Mirrored Sport – The complete design appears reversed in the water.	100 x 21	Wincanton Perfs	Only available in LBEs
Green Tower of Art 50p	The new smaller Tower of Art stamp as mentioned in 'Making Money'. In shades of green.	93 x 20	Wincanton Perfs	Unlimited
Owlswick 50p Tower of Art forgery stamp	As above but with greater detail on the dome and the bird just above the Patrician's head.	93 x 20	Wincanton Perfs	Only available in LBEs
Samedi Nuit Mort	Printed in yellow, red and green featuring a caricature of Baron Samedi and the words Samedi Nuit Mort 2008	36 x 44	Wincanton Perfs	Limited to 500 in special LBEs
The Klatch 10 Wol	Introducing a new stamp from the Klatch Revenue service, featuring the phoenix rising from the flames. The stamp is in shades of marine blue.	39 x 30	Wincanton Perfs	Unlimited
The Klatch 10 Wol Sport	As above except the phoenix is squinting, and there are missing lines on the shoulder of the left hand	39 x 30	Wincanton Perfs	1 per sheet of 36
The Klatch 50 Wol	An impressive new stamp from the Klatch Revenue service. In various shades of sage and mint green and buff, featuring the phoenix rising from the flames.	44 x 33	Wincanton Perfs	Unlimited
The Klatch 50 Wol sport	As above except that the licks of flame at the bottom of the stamp have been altered	44 x 33	Wincanton Perfs	1 per sheet of 32



Stamp	Description	Size (mm)	Perfs	Rarity
½ p Violet	Shades of violet on a white face. Central design is of the original Post Office after restoration and bearing the motto <i>Neither Rain nor Snow Nor Gloom of Night Can Stay These Messengers About Their Duty.</i>	33 x 20	Wincanton Perfs	Unlimited
Sto Helit 1p	A new design featuring the Sto Helit family crest, in rust red on a pale sage background, and produced by Cripslock Engravers.	24 x 31	Wincanton Perfs	Unlimited
Sto Helit 1p Sport V1	Version one is the hole with a shadow - the shadow is on the opposite side. Without a magnifying glass it just appears that the white dot has changed place.	24 x 31	Wincanton Perfs	Only in LBEs
Sto Helit 1p Sport V2	Version two is the displaced 'p'	24 x 31	Wincanton Perfs	Only in LBEs
Sto Helit 4p	Replacing the 5p Sto Helit stamp, the new 4p also features the portrait of Susan Sto Helit, but has a number of different design features, notably the size of the boars' heads. It is printed in shades of brown on an ivory background.	27 x 34	Wincanton Perfs	Unlimited
Sto Helit 4p Sport	As above but her hair is neat and in place	27 x 34	Wincanton Perfs	One per sheet of 16
Djelibeybi 5P	Not to be outdone by their Klatchian neighbours, the postal service of Djelibeybi has introduced two new stamps. The 5 Ptascp features Offler in shades of river green.	60 x 32	Wincanton Perfs	Unlimited
Djelibeybi 5P Sport	The bird at the top is looking left rather than right.	50 x 32	Wincanton Perfs	One per sheet of 24
Djelibeybi 1T	Not to be outdone by their Klatchian neighbours, the postal service of Djelibeybi has introduced two new stamps. The 1 Talon shows a typical view of Djelibeybi with, er, pyramids.	44 x 30	Wincanton Perfs	Unlimited
Djelibeybi 1T Sport	As above but the camel is a Dromedary rather than a Bactrian.	44 x 30	Wincanton Perfs	One per sheet of 32
Tsort 1D	A new stamp from Tsort featuring the Great Pyramid, created for the Tsort Post Office by Teemer and Spools with designs left over from the Klatch and Djelibeybi contracts.	32 x 29	Wincanton Perfs	Unlimited
Tsort 1D Sport	A domed building is visible above the letter S.	32 x 29	Wincanton Perfs	1 per sheet of 42
Lorenzo 1 Tribute	This stamp commemorates the actions of Master Lambert Cordwainer. Black on yellow design with the wording Ankh-Morpork Post Office A tribute to King Lorenzo 1, One Farthing.	35 x 40	Wincanton Perfs	Available with Journal Issue 14
Racing Colours 1p Patrician	Mostly black showing the profile of Lord Havelock Vetinari. Has a fine burelage with stylised rose cartouche in each top corner and the letters A and M at the bottom. The Patrician is wearing his racing skull cap.	20 x 25	Wincanton Perfs	In the May 2008 meet LBEs
Farthing Duty Paid	A boon to the amateur embalmer, a small box containing embalming salts from the Old Kingdom, as seen in all the best pyramids. Sealed with a warning that these salts are not for table use and an Ankh-Morpork Consulate duty stamp.	26 x 33	Wincanton Perfs	Only available on the Old Kingdom embalming salts box
2p Duty Paid	Sample the delights of Klatchian coffee! We understand that this cardboard box contains genuine Klatchian 'Nimf of the Casbah' brand coffee beans, but we are unable to check because the box is sealed with a label, 'Trade Sample Only Not for Resale' and a 2p Ankh-Morpork Consulate Excise Duty Stamp.	26 x 33	Wincanton Perfs	Only available on the Nimf of the Casbah mild Klatchian Coffee box
4p Postage Due	The new stamp is a 4p Postage Due in postbox red on white.	30 x 25	Wincanton Perfs	904 mint stamps Only available in LBEs
4p Postage Due Sport	The sport is the 'p' of 4p is inverted, making it 4d	30 x 25	Wincanton Perfs	100 mint stamps Only available in LBEs
Postage Paid	Red and black on cream portrait of the Patrician featuring the wording Postage Paid Ankh-Morpork only and bearing the motto <i>Neither Rain nor Snow Nor Gloom of Night Can Stay These Messengers About Their Duty.</i>	30 x 40	Wincanton Perfs	Only seen on 'Mrs Parker's Opera Ticket' and 'Dr Zellter's Junk Mail' so far.



Stamp	Description	Size (mm)	Perfs	Rarity
Hogswatch 2008 5p	The stamp for Hogswatch in the Year of the Three Roses features a laden banquet table.	45 x 87	Wincanton Perf	Unlimited
Hogswatch 2008 5p Sport	As above but the removal of a candle flame (left hand portion), winking eye of the pig (middle portion) or addition of potato (right hand portion)	45 x 87	Wincanton Perf	1 per sheet of 10
One third of a Hogswatch 2008 5p	As for the common stamp above but the stamp is perforated and divided into thirds.	45 x 29	Wincanton Perf	10 sheets perforated in this way. Therefore 270 of each type only available in LBEs
One third of a Hogswatch 2008 5p Sport	As for the sport stamp above but the stamp is perforated and divided into thirds.	45 x 29	Wincanton Perf	10 sheets perforated in this way. Therefore only 30 sport portions available in LBEs
The Fourecks Overprint	Marking the start of the new academic year, the Unseen University penny stamp which depicts the Unseen University library enclosed in a circle with the wording "Unseen Univ" in gold and Ochre, has been overprinted by Messrs Sidney Sport and Sports for use by students and staff of Bugarup University. The position of the overprint differs on every stamp.	35 x 40	Wincanton Perf	Unlimited
The Fourecks Overprint Sport	The picture of the Unseen University library is a mirror image of the common stamp.	35 x 40	Wincanton Perf	1 per sheet of 25
The Mended Drum \$1	Sponsored by the Guild of Merchants the stamp features the Mended Drum. This is the first in a new series of stamps depicting places of interest in Ankh-Morpork, as part of the Guild's drive to promote tourism. The stamp is letterpress printed in black on an ivory lithographed background.	45 x 38	Wincanton Perf	Unlimited
The Mended Drum \$1 Sport	As above but the Patrician is looking up rather than horizontally	45 x 38	Wincanton Perf	1 per sheet of 30
The Disk \$2	Sponsored by the Guild of Merchants the stamp features The Disk. This is the second in series of stamps depicting places of interest in Ankh-Morpork, as part of the Guild's drive to promote tourism and culture. The stamp is letterpress printed in black on an ivory lithographed background	45 x 38	Wincanton Perf	Unlimited
The Disk \$2 Sport	As above but the Patrician is looking to the right	45 x 38	Wincanton Perf	1 per sheet of 30
The Seamstress 4 Penny Horizontal	The Post Office has now released a new stamp sponsored by the Guild of Seamstresses. In tasteful shades of plum on a goose-pimpled pink background, a seamstress inspects the Guild's coat of arms.	45 x 30	Wincanton Perf	Unlimited
The Seamstress 4 Penny Sport	As above but leaf at the bottom right of the stamp has been changed.	45 x 30	Wincanton Perf	1 per sheet of 36
The Assassin "Wiggy Charlie" 2p	In shades of black grape purple on parchment the Guild headquarters' famous weathervane is featured on the new Assassins' Guild 2p stamp.	27 x 27	Wincanton Perf	Unlimited
The Assassin "Wiggy Charlie" 2p Sport	As above with the addition of a pair of ladies stockings hanging from the knife/dagger.	27 x 27	Wincanton Perf	1 per sheet of 54



The Assassin's Guild Shield 3p	A new stamp sponsored by the Guild of Assassins to take the contract through from the Year of the Three Roses to the Year of the Unquiet Land. The coat of arms against a background of crossed daggers and garrottes in shades of sombre purple.	37 x 37	Wincanton Perf	Unlimited
The Assassin's Guild Shield 3p	As above but I and II on the shield have been swapped over.	37 x 37	Wincanton Perf	1 per sheet of 28
The Watch House 75p	Another stamp in the 'Ankh-Morpork Places of Interest' series sponsored by the Guild of Merchants. This one features the Watch House.	37 x 56	Wincanton Perf	Unlimited
The watch house 75p Sport	As above but the border around the stamp is a mirror image.	37 x 56	Wincanton Perf	1 per sheet of 21
2.5% Virtual Added Tax Stamp	Red and Black on white stamp featuring the wording "Nil Desperandum percent 2.5% percent Virtual Added Tax".	26 x 30	Wincanton Perf	In LBEs and on mail from Wincanton
Saint Asperger	Commemorating the twinning of Wincanton with Lahnau, Germany. No value stated.	35 x 44	Wincanton Perf	Unlimited On mail from Wincanton
The Peoples Republic of Wincanton	The Peoples Republic of Wincanton twinned with Pyongyang. 1d value.	38 x 48	Wincanton Perf	Unlimited On mail from Wincanton
The Faceless Patrician	Mostly black showing the profile of Lord Havelock Vetinari. Has a fine burelage with stylised rose cartouche in each top corner and the letters A and M at the bottom. The Patrician's face has been smudged.	20 x 25	Wincanton Perf	In LBEs only
The Turtle Moves 25p versions 1 to 7	This series of stamps printed Se-Tenant shows the turtle Great A'Tuin swimming across the skies with the profile of Terry in the bottom right corner.	34 x 31	Wincanton Perf	Unlimited
The Turtle Moves 25p Sport	As Version 6 above with the addition of Jupiter to the image in the bottom left corner	34 x 31	Wincanton Perf	1 per sheet of 42
\$1 Clax Stamp	Black and Blue on white featuring the wording "Post Office Clax Mail" \$1 One Dollar.	22 x 32	Wincanton Perf	Available through the GCTS Scheme.
Penny Prayer Stamps	A sheet of 12 penny prayer stamps, ideal for calling on divine intervention for the communication of special import that must get through. Same design as the stamp in the booklet available with Journal 5 but re-sized and re-valued.	34 x 28	Wincanton Perf	Available through the GCTS Scheme.
2p Postage Due	Green on cream with the wording Postage Due 2p Two Pence	30 x 25	Wincanton Perf	In LBEs only. Reports of versions printed on rough and smooth paper.
1/4p Postage Due	Sepia on yellow, Farthing postage due stamp.	27 x 23	Wincanton Perf	Available with Journal 15
Seamstress 1/4p Postage Paid	Black and Pink stamp with the wording "Postage Paid One Farthing".	26 x 26	Wincanton Perf	Available with Journal 16