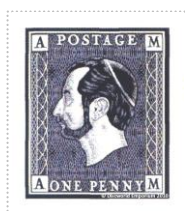
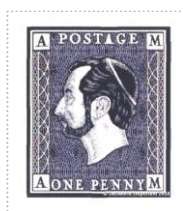


Black and shades on White Fine Burlage field Mature Patrician Dexter Profile Chief POSTAGE A in Square White Canton and M in Square White Canton Sinister
Base ANKH-MORPORK ONE PENNY A in Square White Dexter M in Square White Sinister.

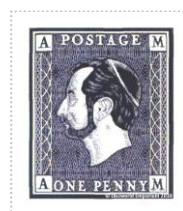
Stamp Name: Penny Patrician Black	Common	SHS AM0199Aw
Region: Ankh-Morpork	Availability: Unlimited Availability	
Perforation: Wincanton 10/2cm/2cm	Width/Height: 24 by 27 mm	
Price: 25p	Release Date: 5 Feb 2010	
<hr/>		
Stamp Name: Penny Patrician Black A	Sport	SHS AM0199Bw
Region: Ankh-Morpork	Availability: Sport found on sheet	
Perforation: Wincanton 10/2cm/2cm	Width/Height: 24 by 27 mm	
Price:	Release Date: 5 Feb 2010	
The A in POSTAGE is filled in.		
<hr/>		
Stamp Name: Penny Patrician Black M	Imperfection	SHS AM0199Cw
Region: Ankh-Morpork	Availability: Unlimited Availability	
Perforation: Wincanton 10/2cm/2cm	Width/Height: 24 by 27 mm	
Price:	Release Date: 5 Feb 2010	
The space below the M in the bottom right hand side is blurred First notified by Nobody on 13th May 2010.		
<hr/>		
Stamp Name: Penny Patrician Black Reprint	Variation	SHS AM0199Dw
Region: Ankh-Morpork	Availability: Unlimited Availability	
Perforation: Wincanton 10/2cm/2cm	Width/Height: 24 by 27 mm	
Price: 25p	Release Date: 27 Nov 2010	
The reprint has a darker and shinier ink. The black ink is contoured. The old inks were lead based and have now been used up and been replaced with modern inks.		
<hr/>		
Stamp Name: Penny Patrician Black A Reprint	Sport	SHS AM0199Ew
Region: Ankh-Morpork	Availability: Unlimited Availability	
Perforation: Wincanton 10/2cm/2cm	Width/Height: 24 by 27 mm	
Price:	Release Date: 5 Feb 2010	
The A in POSTAGE is filled in.		
<hr/>		
Stamp Name: Penny Patrician Black M Reprint	Variation	SHS AM0199Fw
Region: Ankh-Morpork	Availability: LBE only	
Perforation: Wincanton 10/2cm/2cm	Width/Height: 24 by 27 mm	
Price:	Release Date: 5 Feb 2010	
The space below the M in the bottom right hand side is blurred		



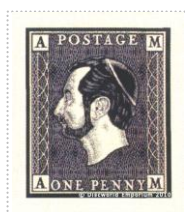
SHS0199Aw



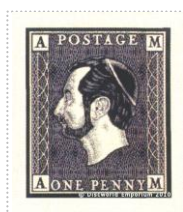
SHS0199Bw



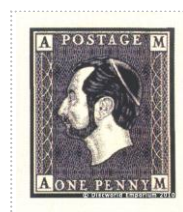
SHS0199Cw



SHS0199Dw



SHS0199Ew



SHS0199Fw